


# Modern Manufactured Home kit in HO scale

This kit includes all building parts milled in white styrene plastic and clear window glazing. All parts fit together but may need light sanding in joints for cosmetic reasons. The model needs painting.

Some model building and painting skills are required.



Manufactured by Custom Cuts by 

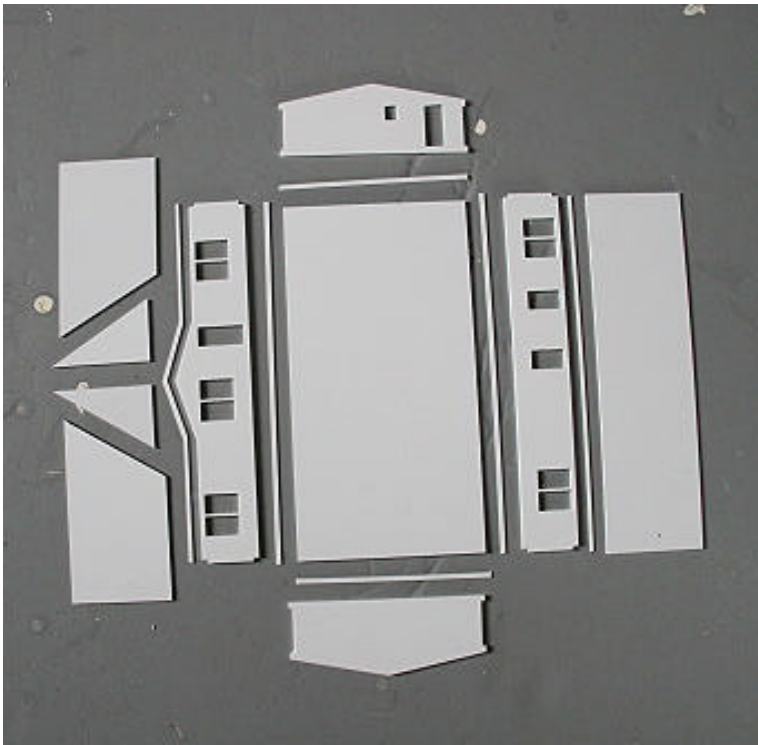
Summit USA LLC, 512 Ford Street, Lake Charles, LA 70601  
[www.summit-customcuts.com](http://www.summit-customcuts.com)

## Assembly instructions for Manufactured Home

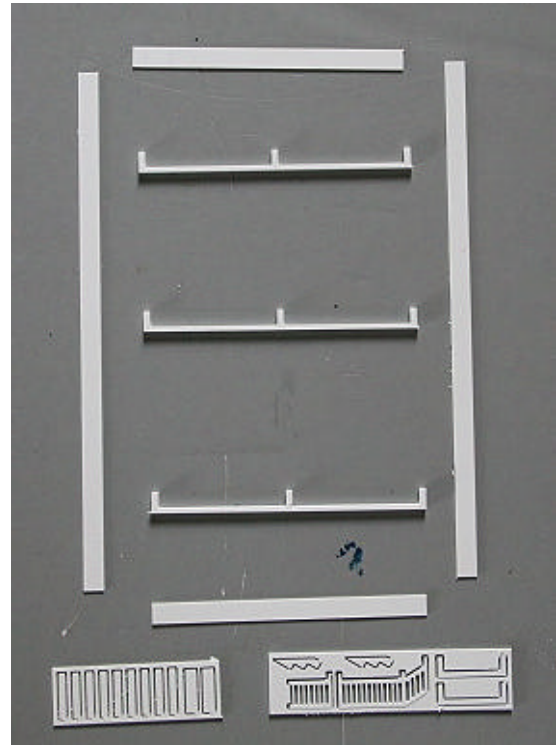
Thank you for buying this Manufactured Home kit. Please take some time to read these instructions before you begin assembling.

This kit is milled in styrene plastic and is very easy to glue together using Plastruct Plastic Weld or similar glue products. The wall parts are tabbed and slotted for easier assembly.

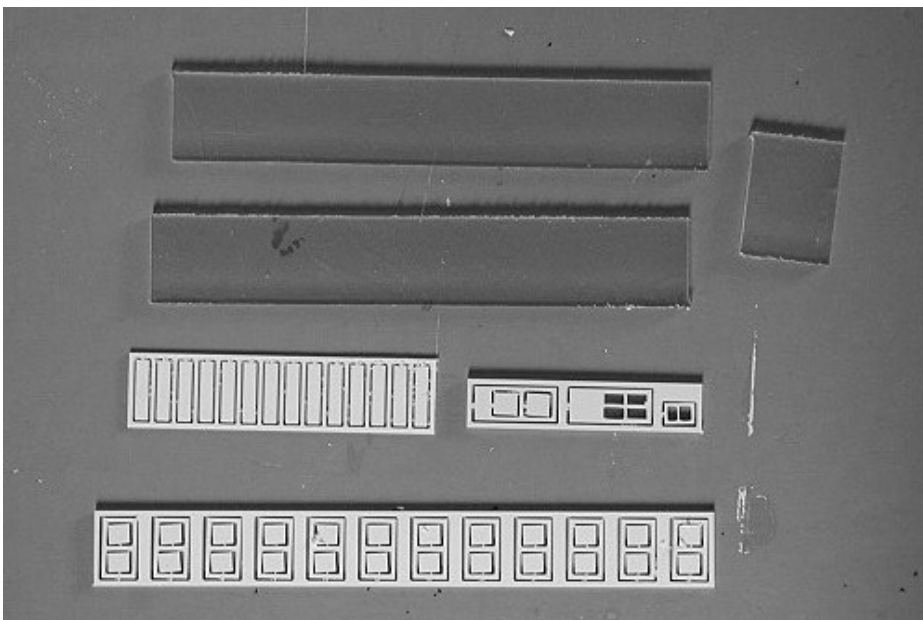
Take your time to identify all parts, lay them out and clean them for any burrs before gluing them together.



Floor, walls, roof and trim

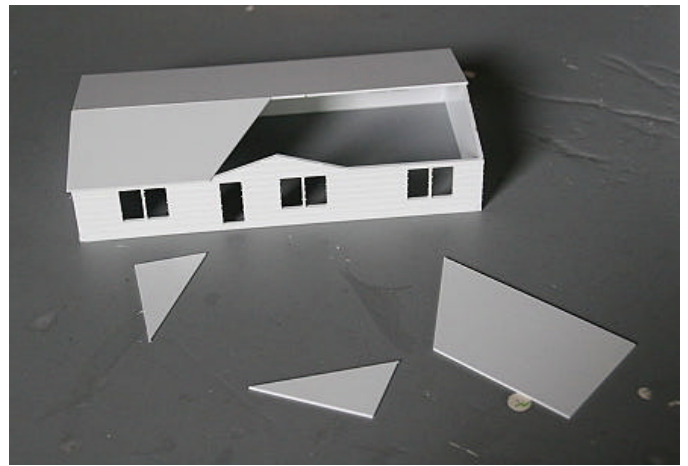
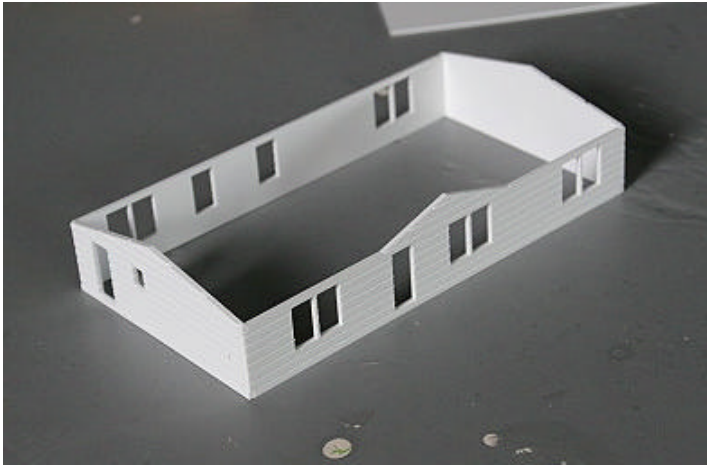


Foundation, skirts and stairs

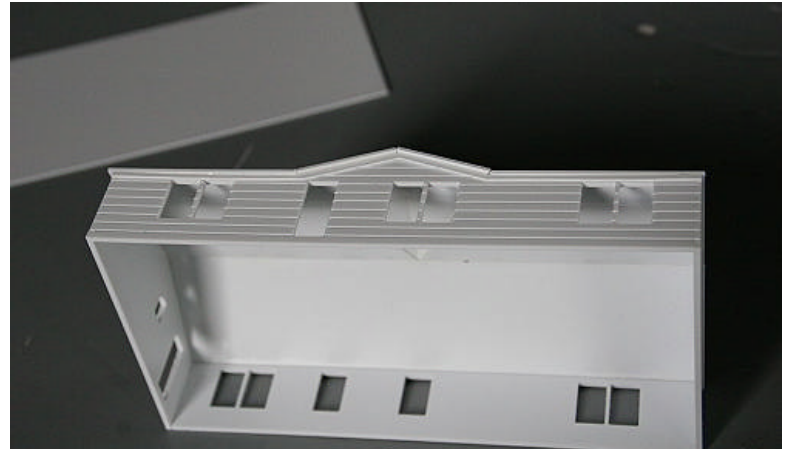
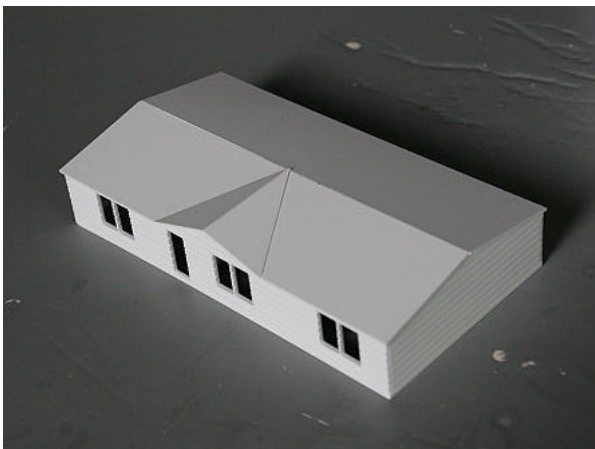


Windows, doors, shutters and glazing

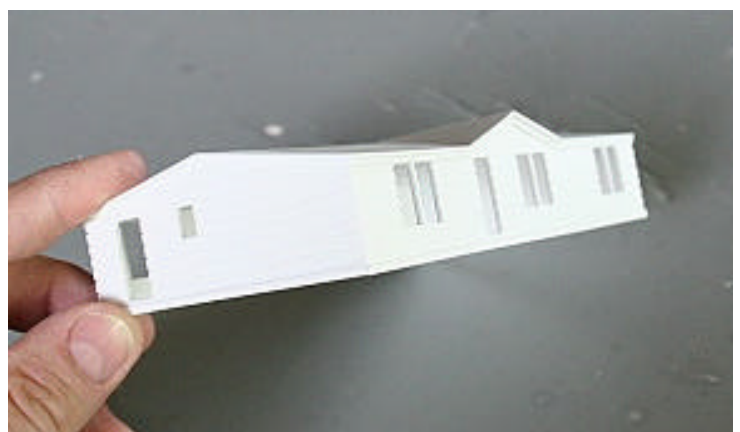
## Assembly



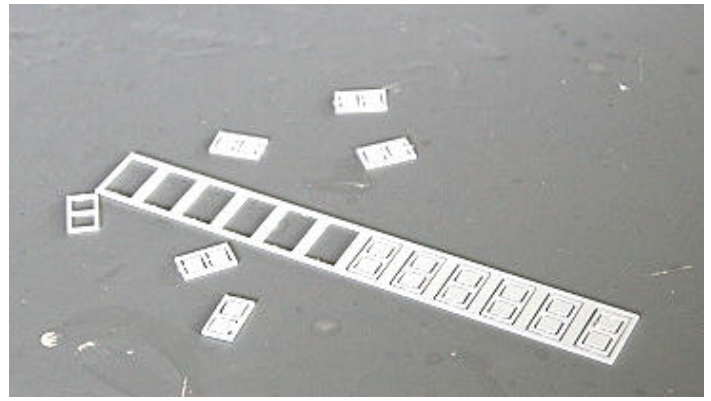
Start by assembling the four walls as shown. The parts go almost together, then apply the liquid glue and apply pressure to the parts to make them go all the way together. Glue on the roof pieces.



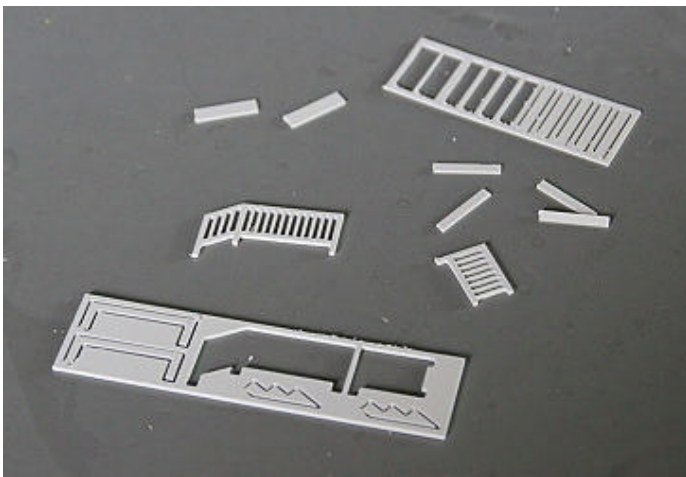
Mount the trim strips along the roof line on the front and rear walls.



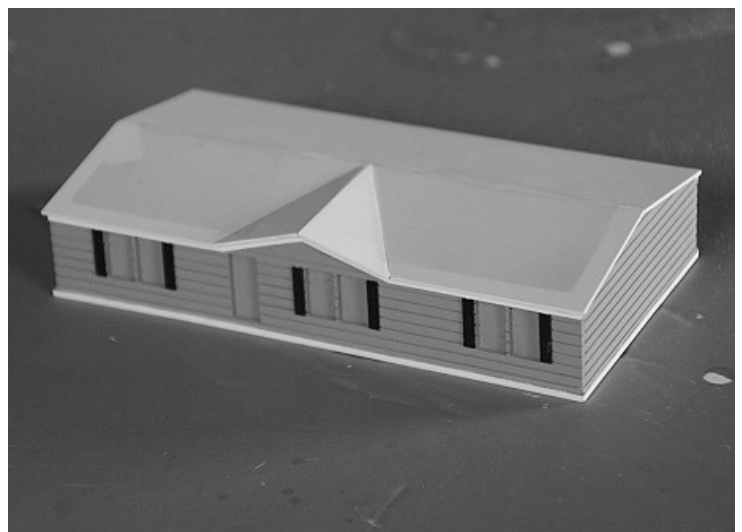
Glue the columns to the bottom of the floor. Glue the bottom trim strips all around the walls, leaving a lip of 0.04" (1mm) to cover the skirt joint.



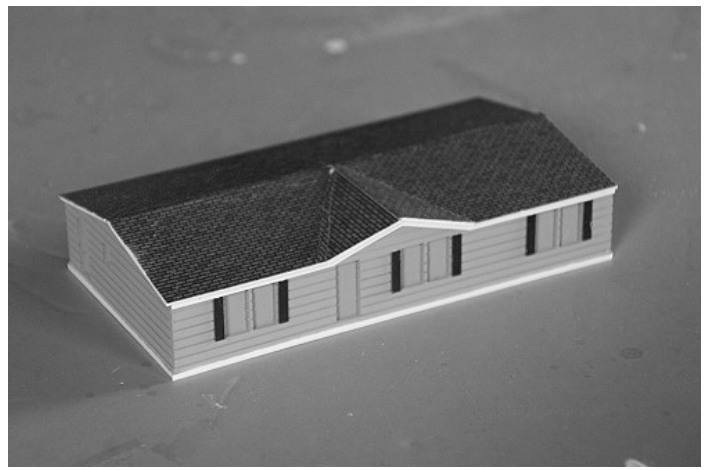
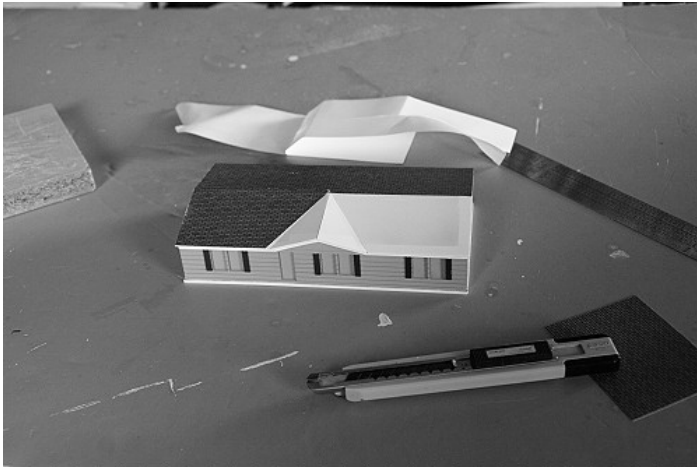
Test fit the house on the floor. Cut the windows and doors out of the sprue and clean them for any burrs.



Cut the stair pieces from the sprue and glue them together as shown



Mask off the windows on the inside with masking tape. Mask off the trim strips and paint the building. Mount the shutters (still on the sprue) on a piece of cardboard and paint them. When dry, cut the shutters out of the sprue and mount them on the wall with a tinu drop of white glue.



Mount the roofing material, Peel only a small part of the back paper and position the roofing using the peak of the roof as the baseline, then carefully peel the rest as you firmly press the self-adhesive roofing in place. Cut off excess along the edges with a sharp hobby knife. Give the almost completed building a coat of Testors Dull Coat.



Mount the window glazing inside the wall. When the glue has set, press in the window frames. This is a press fit so you do not need to glue them in. If you want to glue them in place, use Crystal Clear or a similar liquid glass product.

Enjoy your Manufactured Home on your layout.

Here are some other products you may enjoy in a future project:



#SMFS Summit Motel, full version



#DP-001 Domino's Pizza take-out



#CS-001 Dave's Coffee Shop



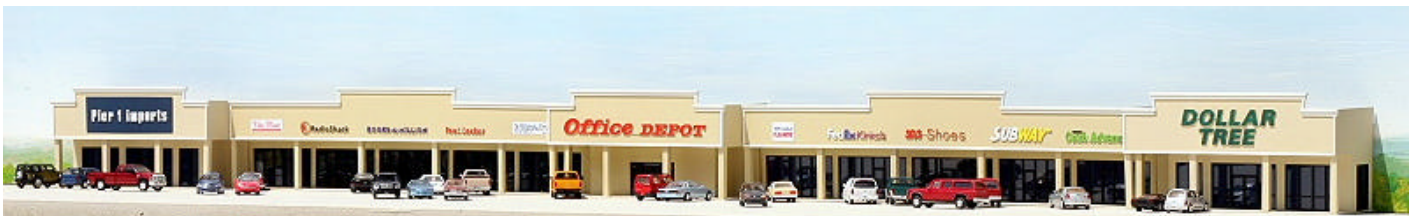
#TB-001 Taco Bell Restaurant



#CVS-001 CVS Pharmacy



#LO-001 Lowe's backdrop building



Mall complex



#ML-001 Strip Mall backdrop building #1



#ML-002 Strip Mall backdrop building #2



#ML-003 Office Depot backdrop building

#ML-004 Mall street sign



#ML-005 Pier 1 Imports backdrop building

#ML-006 Dollar Tree backdrop building



#JB-001 Jack-In-The-Box Restaurant



#SW-001 Subway Restaurant



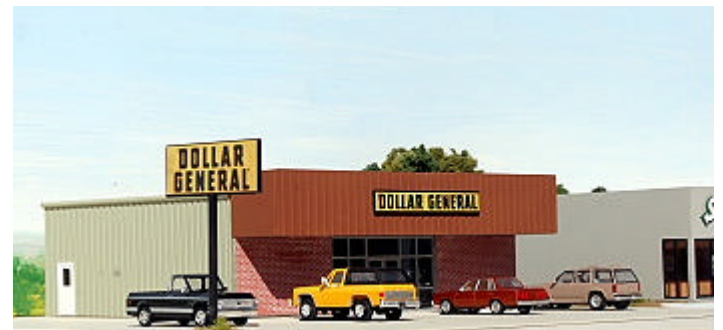
#OR-001 O'Reilly Auto Parts Store



#WH-001 Waffle House Restaurant



#SH-001 Shell Gas Station & Store



#DG-001 Dollar General Store

Keep updated for new products on our website: [www.summit-customcuts.com](http://www.summit-customcuts.com)