

Modern Fire Station kit in HO scale

This kit includes all building parts milled in white styrene plastic, laser cut acrylic and wood, and clear window glazing. All parts fit together but may need light sanding in joints for cosmetic reasons. The model needs painting.

Some model building and painting skills are required.



Manufactured by Custom Cuts by 

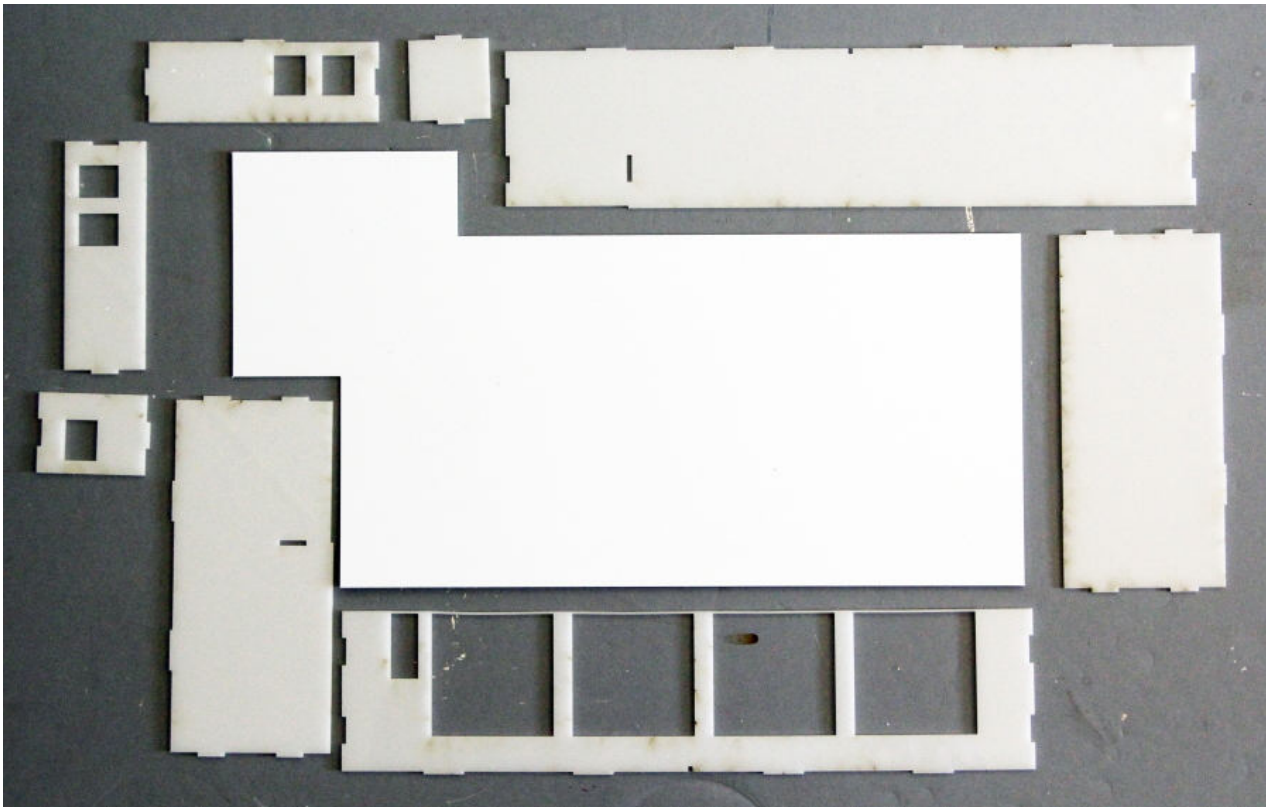
Summit USA LLC, 512A Ford Street, Lake Charles, LA 70601
www.summit-customcuts.com

Assembly instructions for Fire Station

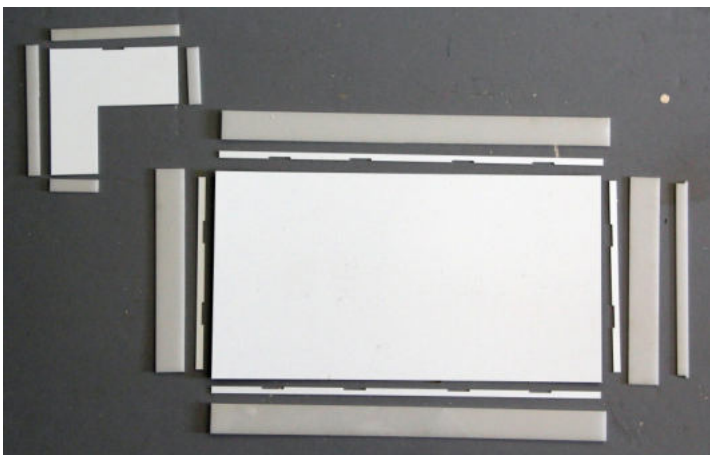
Thank you for buying this Fire Station kit. Please take some time to read these instructions before you begin assembling.

This kit is milled in styrene plastic and laser cut in acrylic and is very easy to glue together using Plastruct Plastic Weld or MicroMark Samestuff, the latter works best. The wall parts are tabbed and slotted for easier assembly.

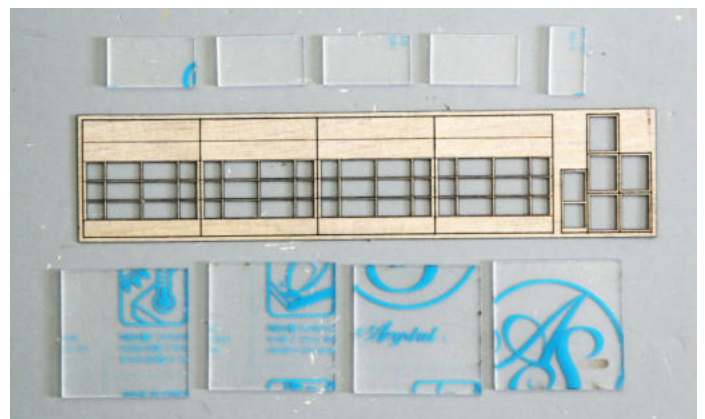
Take your time to identify all parts, lay them out and clean them for any burrs before gluing them together.



Floor and walls

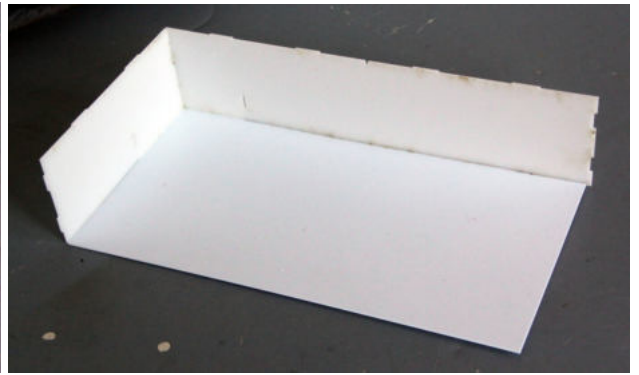
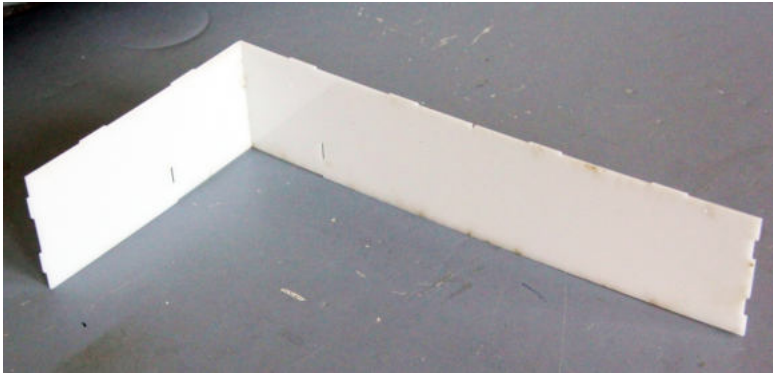


Roof and trim

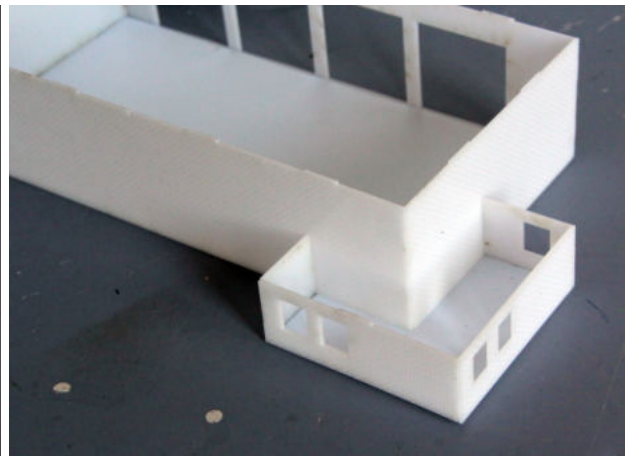
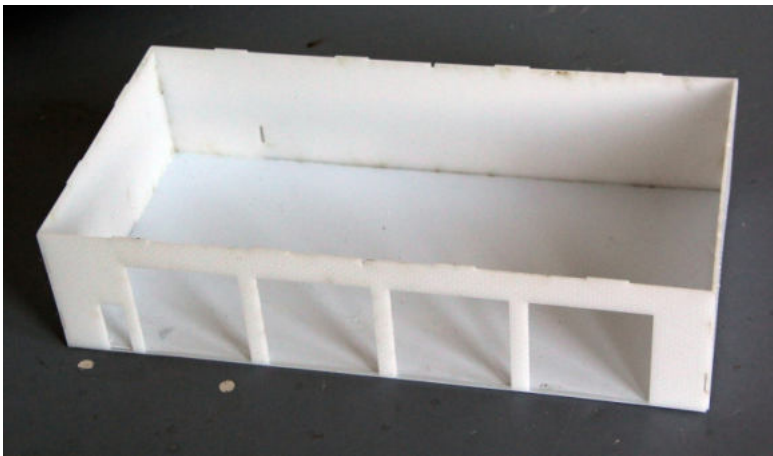


Doors, windows and glazing

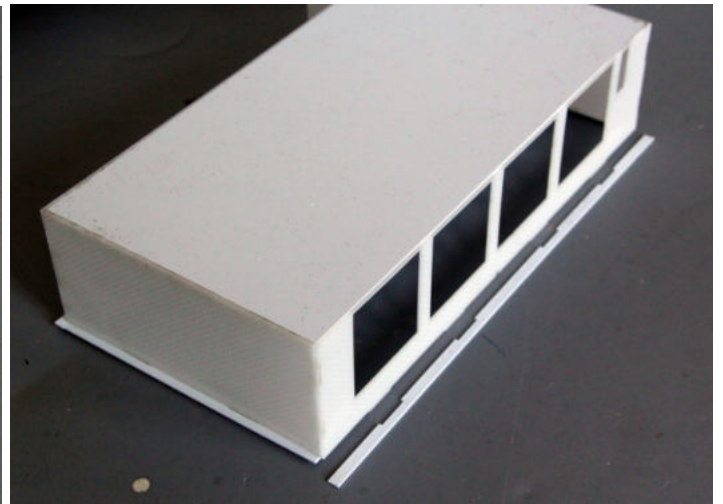
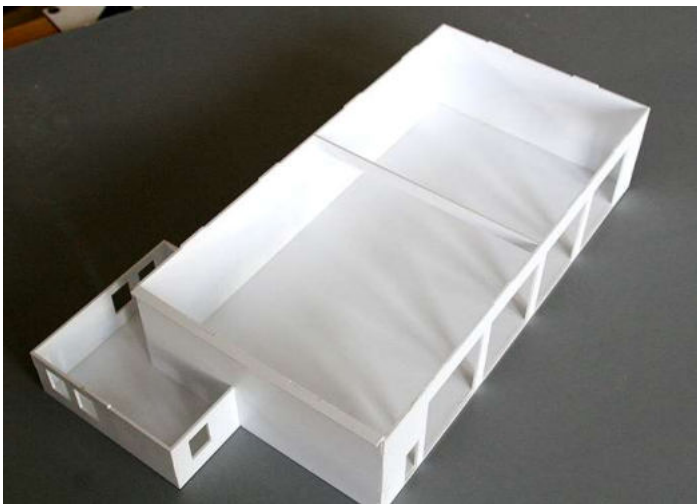
Assembly



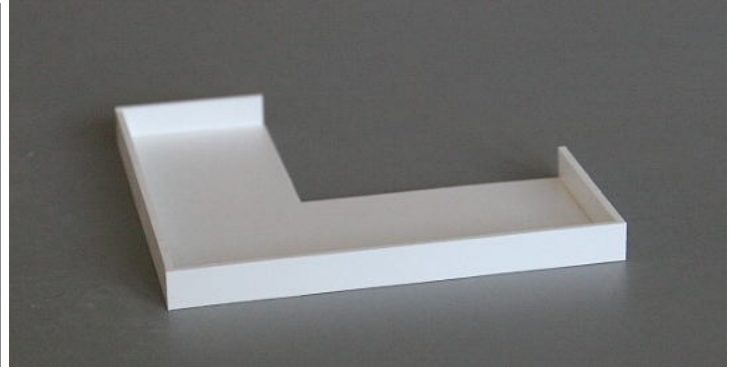
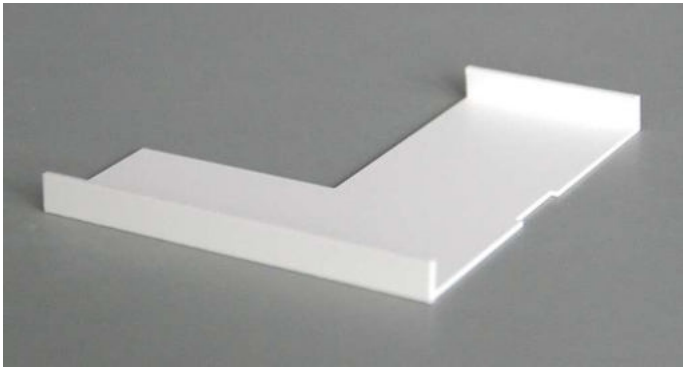
Start by assembling the left and rear walls as shown. Then glue the walls to the edge of the base plate.



Glue on the remaining garage walls and the walls of the low crew section.



Mount the roof support across the middle. Install the strips for the roof overhang around the walls.



Glue the roof trim strips around the edges (NOT on top) of the small roof.



Glue the roof trim parts onto the edge of the overhang strips. Begin with the short sides.

Painting

Leave the doors and windows on the sprue and paint it with gray primer.

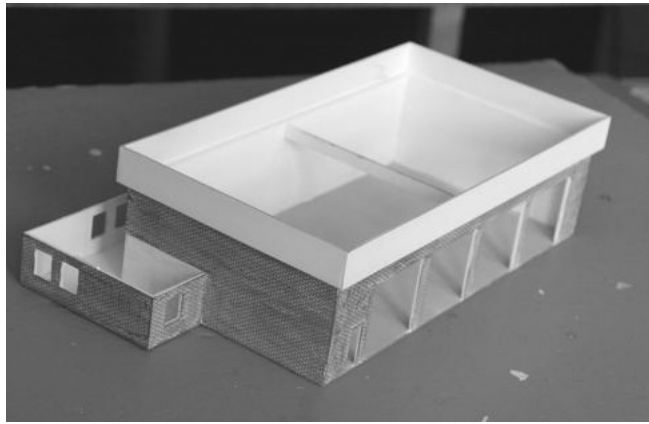
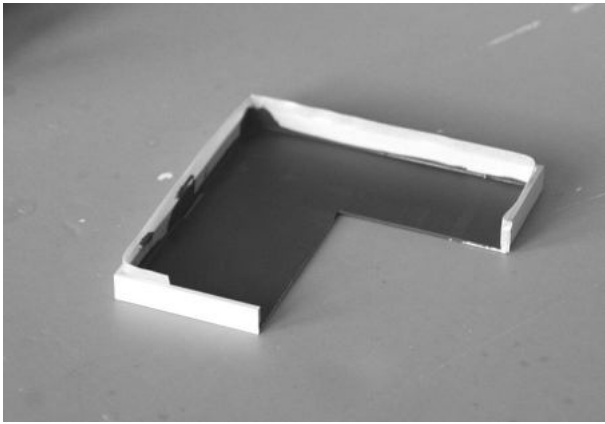
The prototype for this fire station has white doors and roof, but many stations have bare aluminum doors.

Give the doors a good coat of the color. When dried, sand the doors with 120-grit sand paper to smooth. This will eliminate the wood grain. Paint it one more time.

When the paint is dry, carefully cut them out of the sprue with a sharp hobby knife.



If you are spray painting the entire building, spray it with gray primer. If you want to brush paint the bricks, mask off the entire building except the roof fascia and paint it with gray primer. Also paint the small roof over the crew section. When the primer is dry, spray paint the gray areas white.



Paint the roofs Grimy Black.

Paint the brick walls a reddish brown or maroon color. You can brush it on or spray it. Don't forget to mask off the white if you spray it.

If you want to make mortar lines in the brick wall, you can do it using a light gray wash or by using Roberts Brick Mortar Formula, which is a very easy-to-use product with nice results. Then give the whole building a coat of Testors Dull Cote.

At this time, you need to decide which doors you want to leave open and cut off the excess.



Mount the window glazing inside the walls. When the glue has set, install the window frames and doors by peeling off the backing paper and sticking it onto the glass. Be VERY CAREFUL to place the parts correct in the first attempt, once the glue sticks you can't remove it without destroying it.

Place the fire trucks in the station and put on the roof – don't glue. The roof will easily come off again, either pressing with a finger through the open door or lifting it using a hobby knife.

Enjoy your Fire Station on your layout.

Here are some other products you may enjoy in a future project:



#DN-001 Denny's Restaurant



#DP-001 Domino's Pizza take-out



#DP-003 Domino's latest design



#CS-001 Dave's Coffee Shop



#TB-005 1970's Taco Bell



#TB-006 1980's Taco Bell



#TB-001 Taco Bell Restaurant



#TB-003 New Taco Bell Restaurant



#KFC-001 KFC Restaurant



#SW-001 Subway Restaurant



#SW-002 Subway latest design



#WH-001 Waffle House Restaurant



#HD-001 Hardee's Restaurant



#CJ-001 Carl's Jr. Restaurant



#PH-001 Pizza Hut Restaurant



#EX-001 Exxon Gas Station & Store



#SC-001 Rural Shamrock Gas Station



#SH-001 Shell Gas Station & Store



#GS-001 Gas Station backdrop



#DG-001 Dollar General Store



#DG-002 Dollar General, latest design



#LO-001 Lowe's backdrop building



#CVS-001 CVS Pharmacy



#FS-001 Modern City Fire Station



#JL-001 Jiffy Lube



#ML-001 Strip Mall backdrop #1



#ML-002 Strip Mall backdrop #2



Mall complex



#ML-003 Office Depot backdrop



#ML-005 Pier 1 Imports backdrop



#ML-006 Dollar Tree backdrop



#SMFS-001 Summit Motel, full version



#BK-001 First State Bank



#BK-002 Capital One Bank



#DA-001 Discount Auto Parts



#DP-004 MKT Depot



#ST-001 Starbucks Coffee



#WM-001 Walmart backdrop building



#ML-008 Modern Strip Mall

Keep updated for new products on our website: www.summit-customcuts.com