

Hardee's Restaurant kit in HO scale



Parking lot base and cars not included



This kit includes all building parts milled in white styrene plastic and laser cut white acrylic, clear acrylic window glazing, and logo & poster self adhesive decals. All parts fit together but may need light sanding in joints for cosmetic reasons. The model needs painting.

Some model building and painting skills are required.

Manufactured by Custom Cuts by 

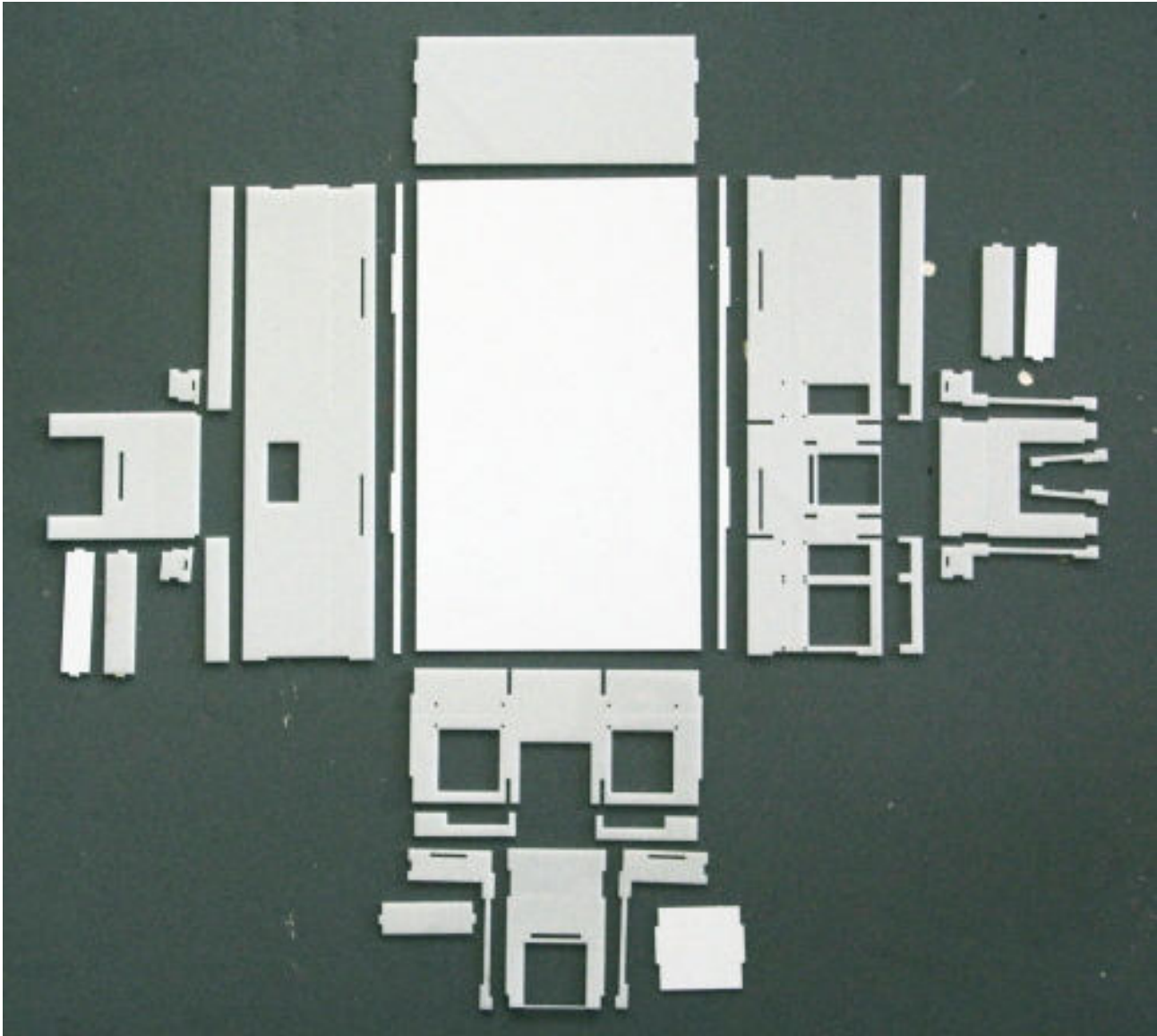
Summit USA LLC, 512A Ford Street, Lake Charles, LA 70601
www.summit-customcuts.com

Assembly instructions for Hardee's Restaurant

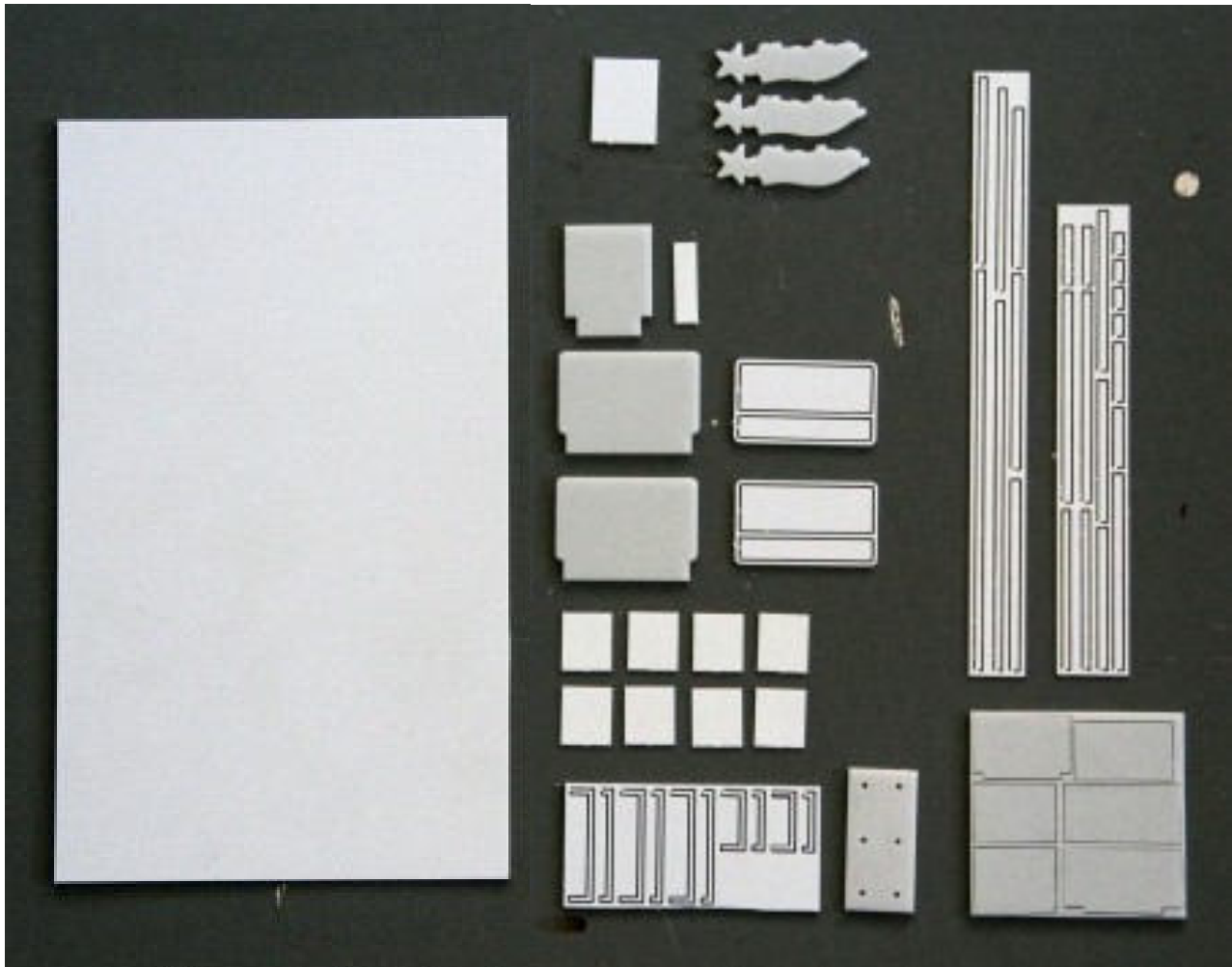
Thank you for buying this Hardee's Restaurant kit. Please take some time to read these instructions before you begin assembling.

This kit is milled in styrene plastic and laser cut white acrylic and self-adhesive wood; and is very easy to glue together using MicroMark Samestuff, Plastruct Plastic Weld or similar glue products. The wall parts are tabbed and slotted for easier assembly.

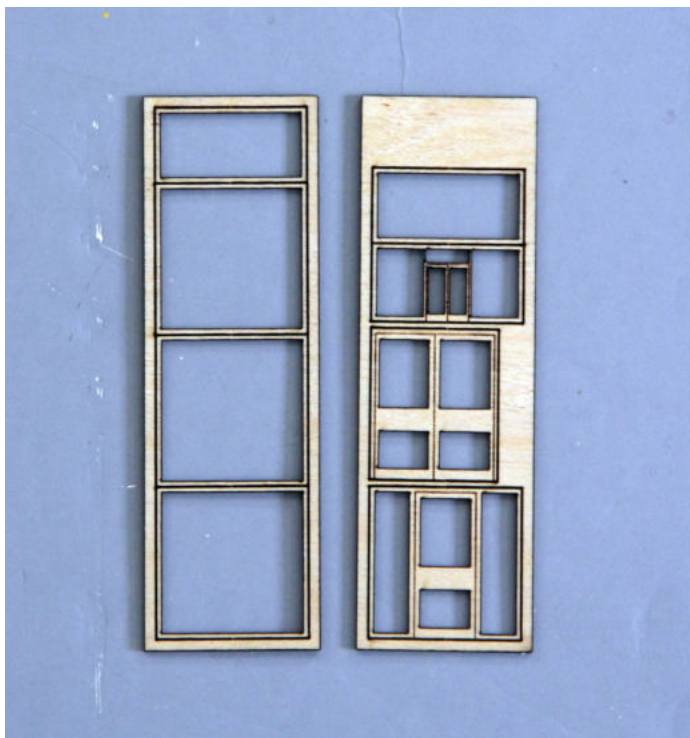
Take your time to identify all parts, lay them out and clean them for any burrs before gluing them together.



Base and wall parts overview, walls and bottom trim strips are acrylic, all other parts are styrene.

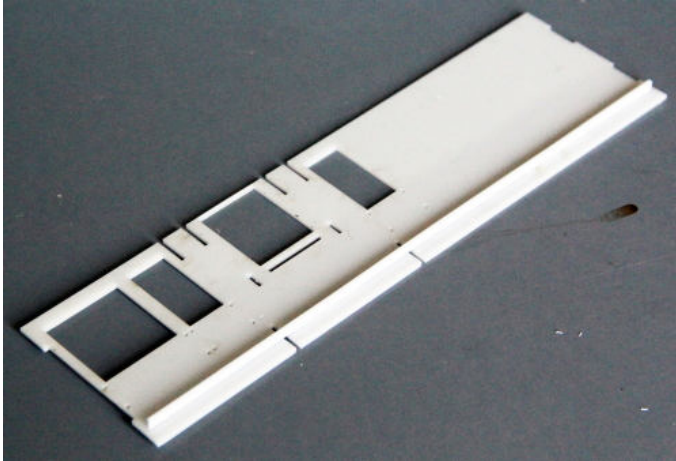


Roof, awnings & brackets, signs and top wall trim.

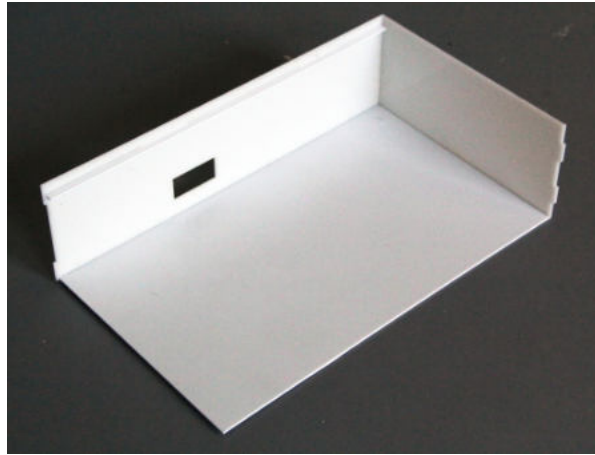
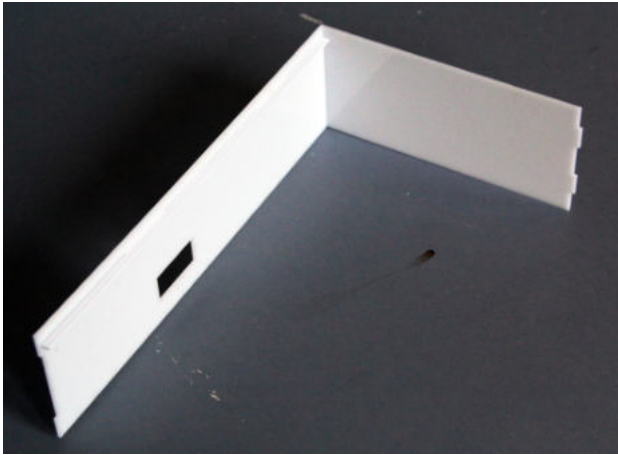


Windows & Doors. (Self-adhesive wood) Clear acrylic window glazing not shown.

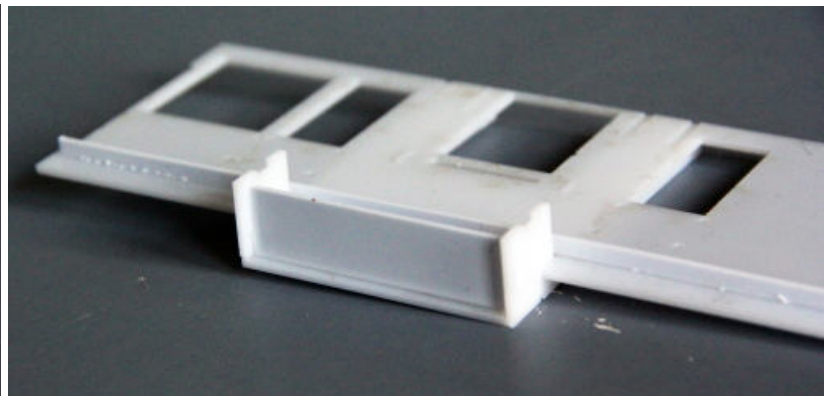
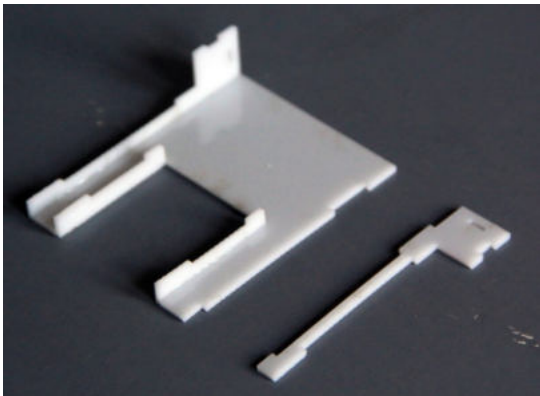
Assembly



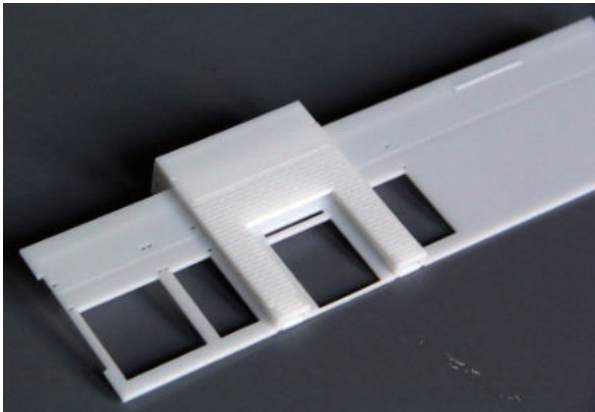
Start by filing the corners of the tabs on the styrene parts with a square or triangular file to insure a good fit. Glue the roof support strips to the inside of the walls.



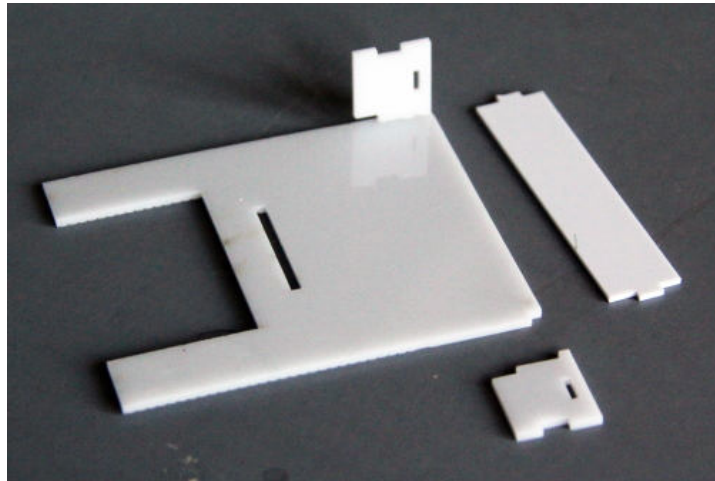
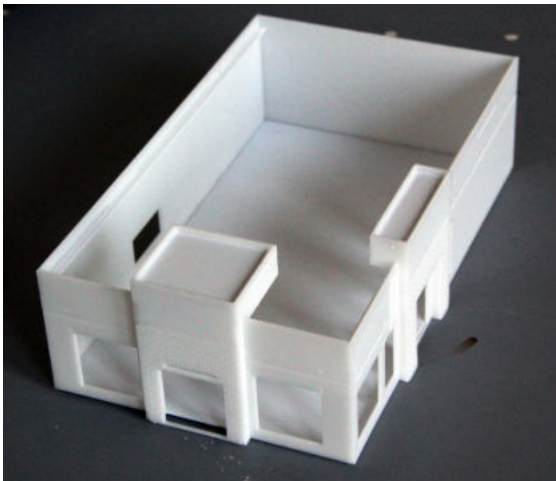
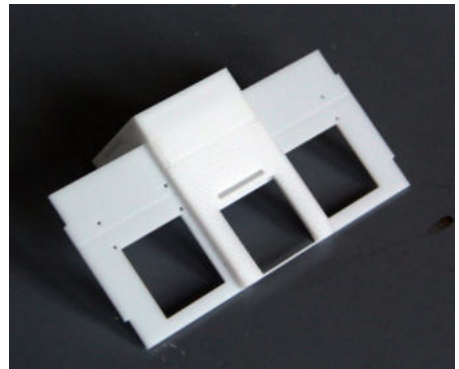
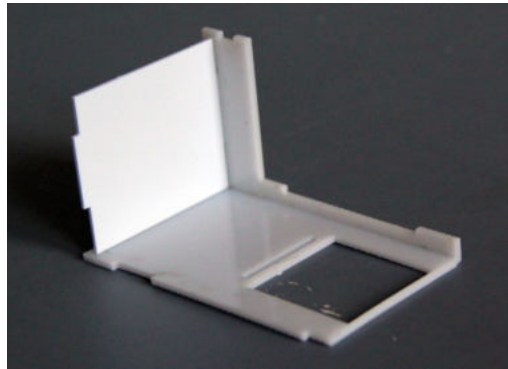
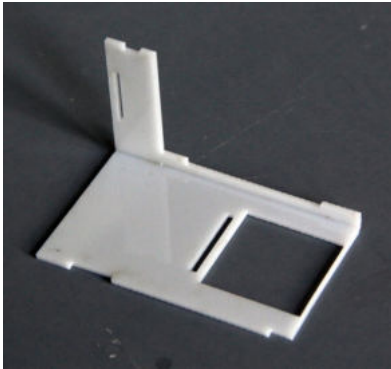
Glue the rear and left side wall together, then glue the walls to the EDGE of the base plate.



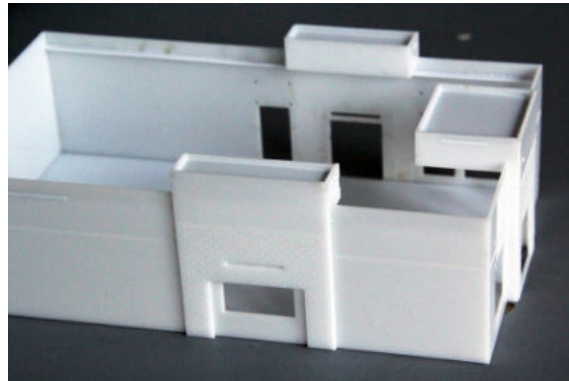
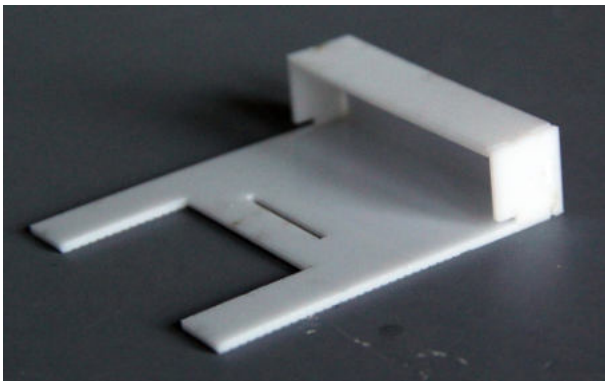
Glue the entrance walls together as shown, put the roof piece in place before gluing the end piece. Then glue it to the side wall as shown on the next page.

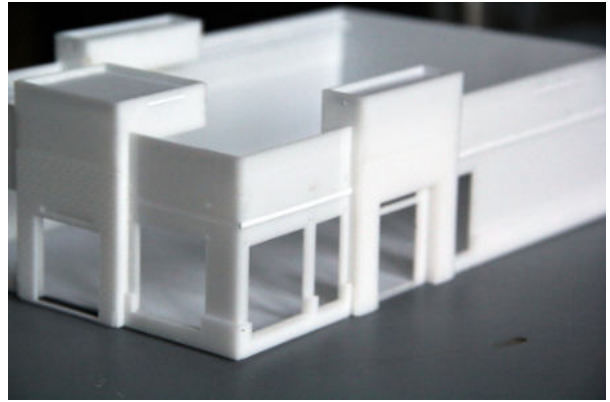
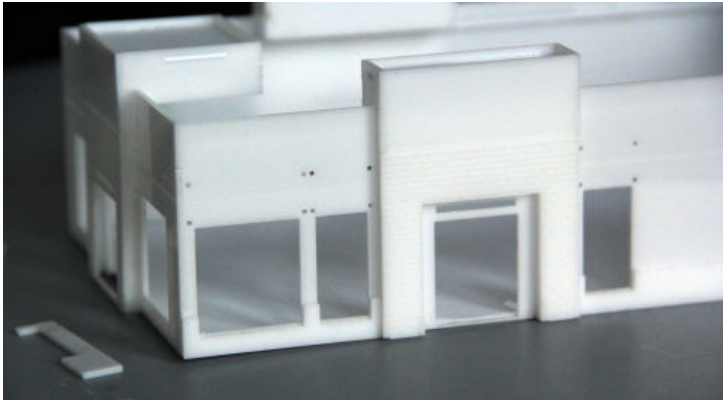


Repeat the process for the front entrance

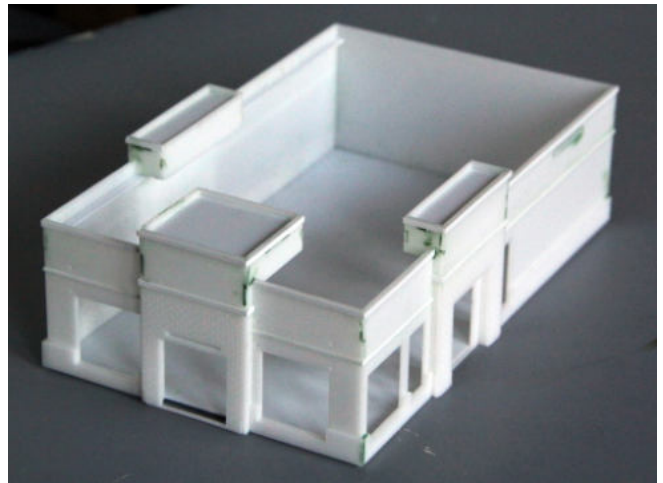
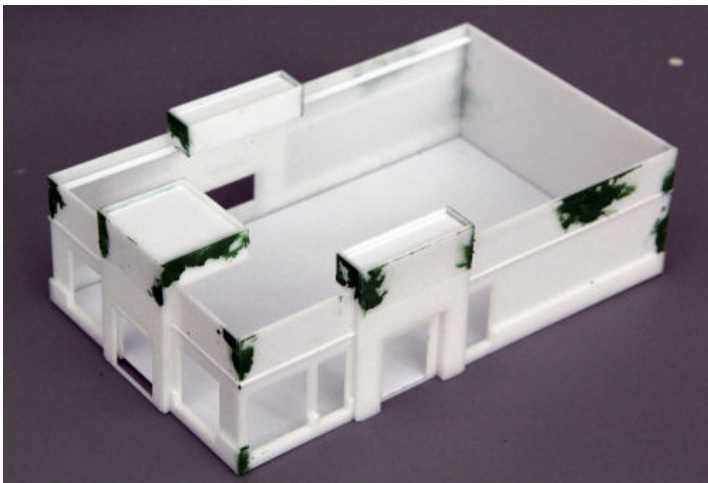


Glue the front and side walls to the edge of the base. Assemble the Drive-thru wall and glue it on.

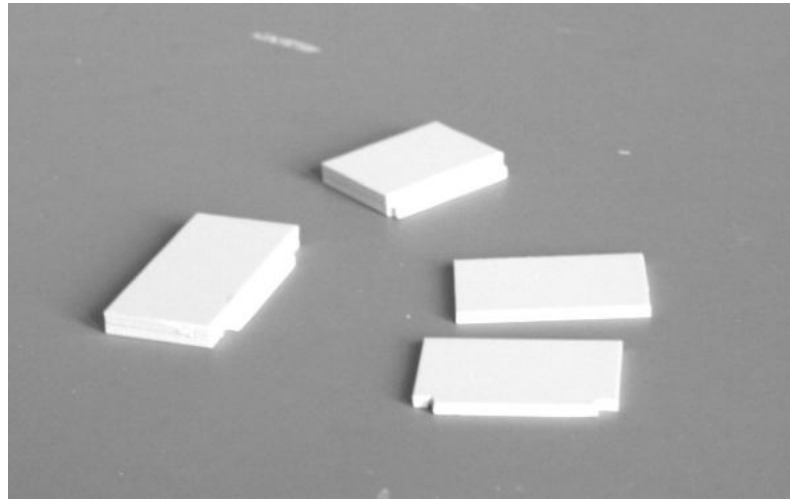
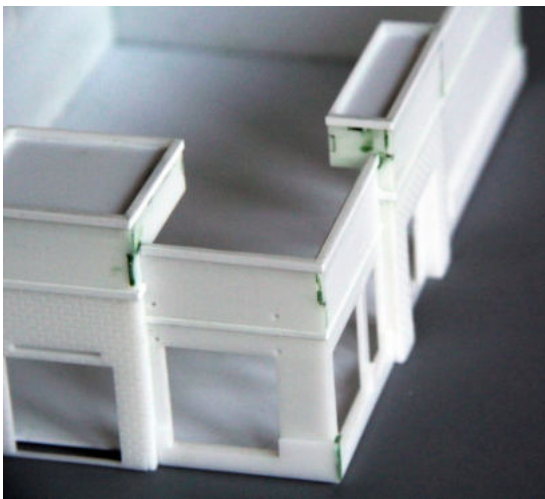




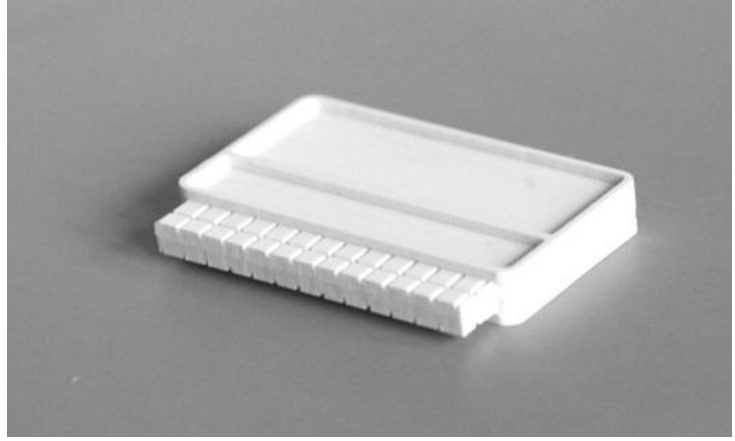
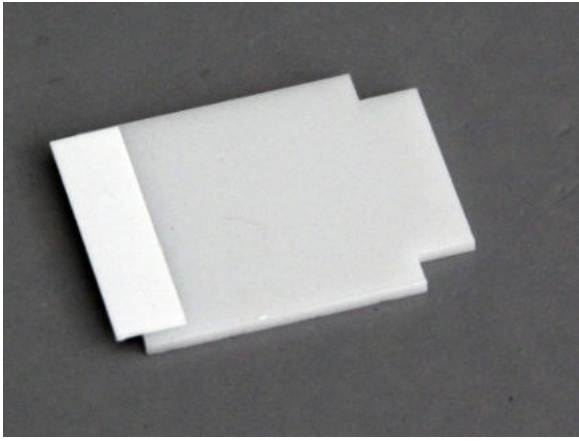
Glue on the trim strips along the bottom of the walls and the 0.06" (1.5 mm) wide wall trim strips on the engraved markings. The trim strips for the entrances and drive-thru wall are 0.08" (2 mm). There are no strips for the rear wall.



Fill the gaps in the joints with model filler and sand it smooth, then glue on the 0.08" (2 mm) wide top trim strips.

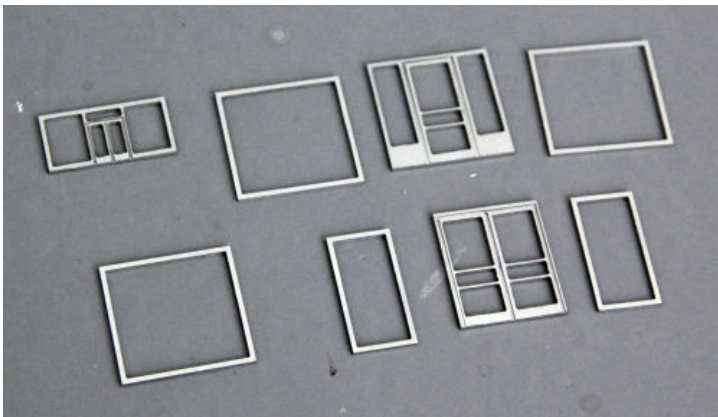


Glue the door and drive-thru window awnings together (laminates). You can glue them onto the building now or wait until everything is painted.

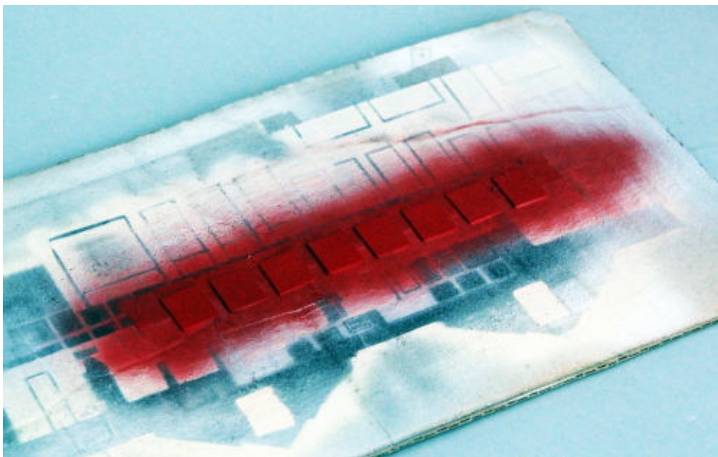


Glue the top piece onto the Drive-thru menu board. Laminate the two sides of the street sign and mount the frames as shown.

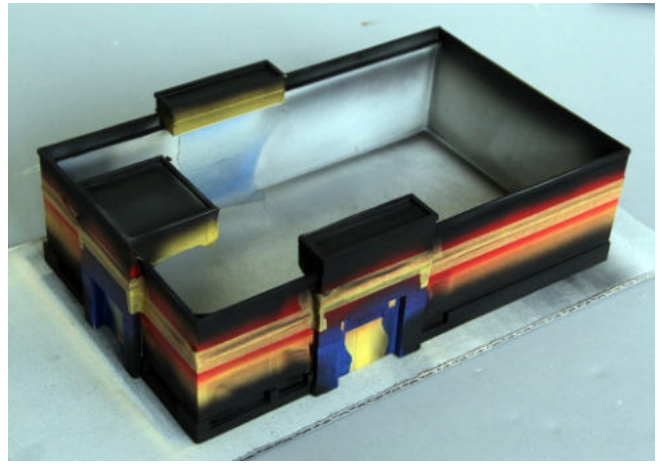
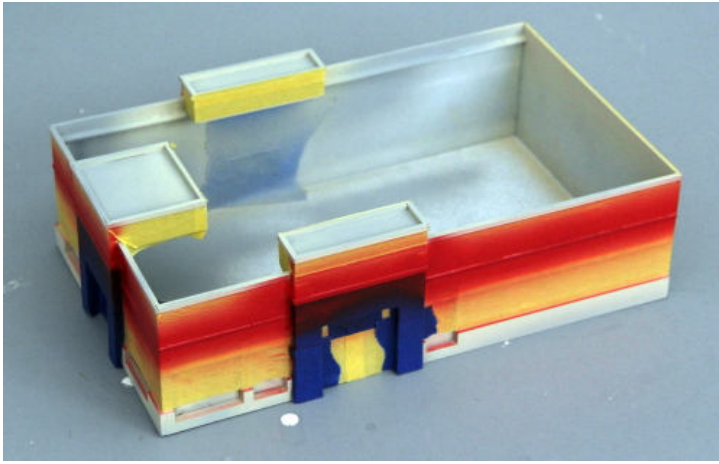
Painting



Leave the window and door frames on the sprue. Mount them on a piece of cardboard with double-sided tape and paint them aluminum. When the paint is dry, carefully cut them from the sprue.



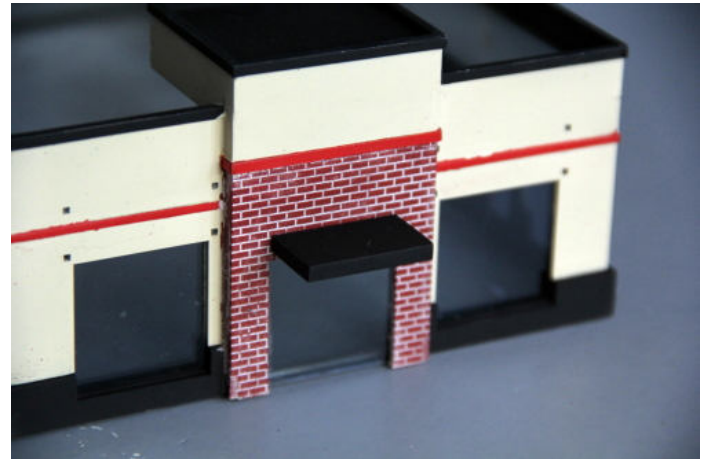
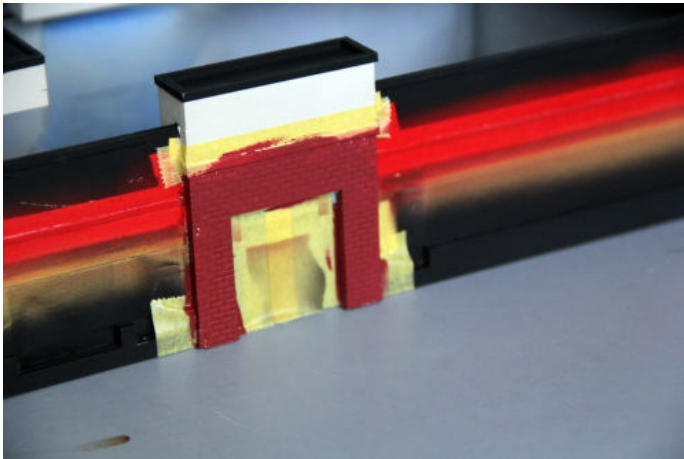
Also cut out the awnings, mount them on a piece of cardboard and paint them bright red.



Cover the window openings from the inside with masking tape, then give the whole building a coat of gray primer.

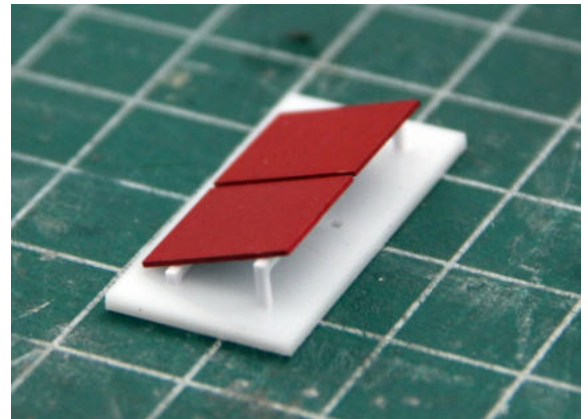
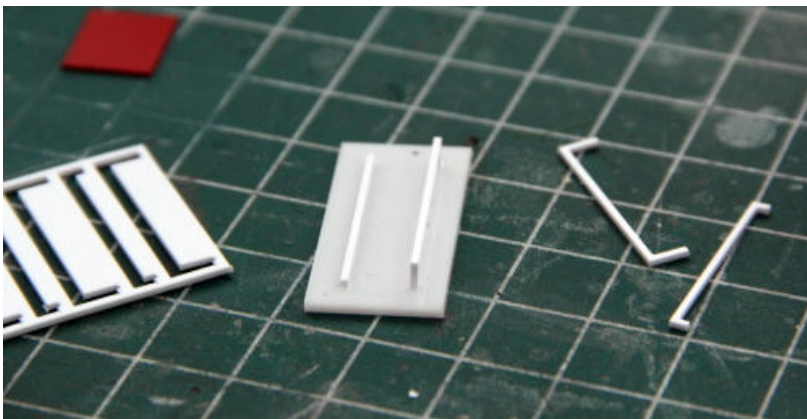
When the primer is dry, paint the walls a light sand color. Let the paint dry for a day or two.

Mask the walls and paint the wall trim strips red and the bottom and top trim black. Also paint the door awnings black.

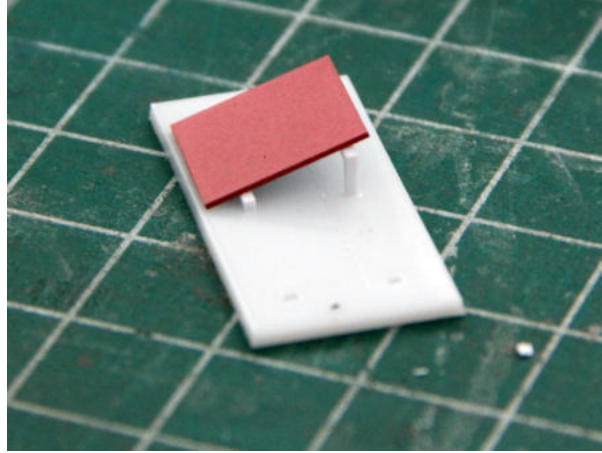
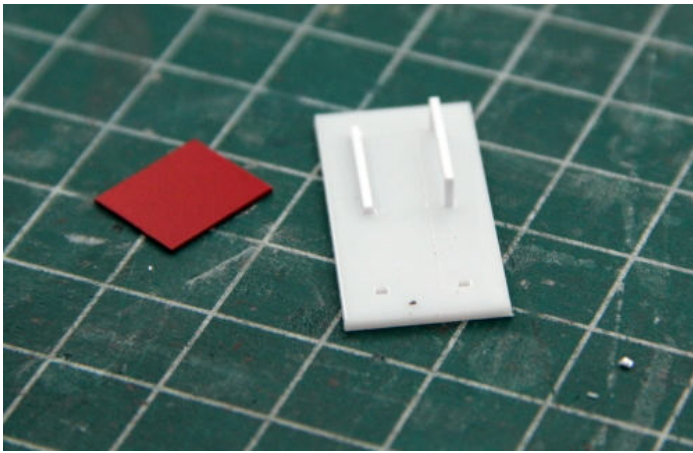


Paint the bricks on the entrances and drive-thru walls a maroon color. When the paint has dried, apply Roberts Brick Mortar Formula as directed on the bottle.

Mount the awnings over the doors and drive-thru window.



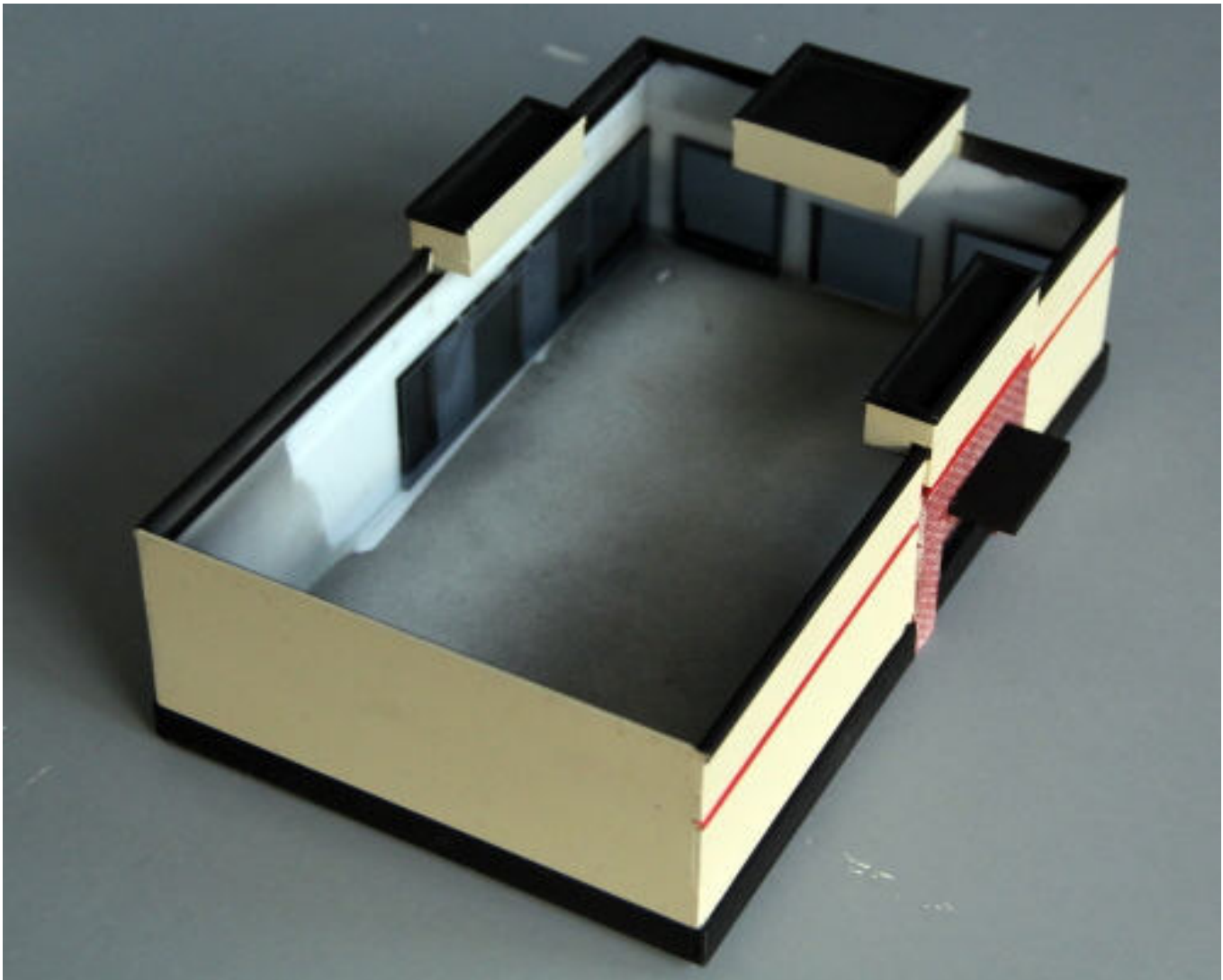
Cut the brackets for the window awning out of the sprue and carefully insert them in the holes in the awning tool. Glue the awning to the bracket so the top edge of the awning just touches the tool.



When the glue has dried and set, brush paint the brackets black.

Installing the windows and doors

Remove the protective paper from the window glazing and install it on the inside of the wall with just a drop of cement along the edges. If you want tinted glass as shown here, put some car window film on the inside of the glazing before mounting them.





Peel off the backing paper from the window and door frames and stick them in place. Be VERY careful to position the parts correct in the first attempt, once the glue sticks you can't remove the parts without destroying them.



Mount the awnings in the holes in the wall, securing them with a drop of glue inside the wall on the upper bracket.

Before you handle the decal sheet you should spray a coat of Krylon Clear Acrylic or Testors Dull Cote on it to protect the print. When the paint is dry, cut out the logos and posters using a steel ruler and a sharp hobby knife.



Mount the logo decal on the logo piece and then paint the white edge of the decal and the edges of the sign with a red Sharpie marker. Mount the sign on the wall using white glue or Woodland Scenics Scenic Glue.



Mount the decals on the street sign, the menu and top poster as shown.



Mount the posters to the windows. Slide the roof on from the back and under the wall pieces.

If you want to detail the roof with vents and air conditioners, we recommend Walthers #933-3733 Roof Details Kit.

Colors used on this model: Testors Sand FS33531, Floquil SOO Line Red, Floquill Engine Black, Humbrol Maroon 73.

Unfortunately the Floquil paints have been discontinued, so you will have to find another match.



Enjoy your Hardee's Restaurant on your layout.

Here are some other products you may enjoy in a future project:



#DN-001 Denny's Restaurant



#DP-001 Domino's Pizza take-out



#DP-003 Domino's latest design



#CS-001 Dave's Coffee Shop



#TB-005 1970's Taco Bell



#TB-006 1980's Taco Bell



#TB-001 Taco Bell Restaurant



#TB-003 New Taco Bell Restaurant



#KFC-001 KFC Restaurant



#SW-001 Subway Restaurant



#SW-002 Subway latest design



#WH-001 Waffle House Restaurant



#HD-001 Hardee's Restaurant



#CJ-001 Carl's Jr. Restaurant



#PH-001 Pizza Hut Restaurant



#IH-001 IHOP Restaurant



#EX-001 Exxon Gas Station & Store



#SC-001 Rural Shamrock Gas Station



#SH-001 Shell Gas Station & Store



#DG-001 Dollar General Store



#DG-002 Dollar General, latest design



#LO-001 Lowe's backdrop building



#CVS-001 CVS Pharmacy



#FS-001 Modern City Fire Station



#JL-001 Jiffy Lube



#ML-001 Strip Mall backdrop #1



#ML-002 Strip Mall backdrop #2



Mall complex



#ML-003 Office Depot backdrop



#ML-005 Pier 1 Imports backdrop



#ML-006 Dollar Tree backdrop



#SMFS-001 Summit Motel, full version



#BK-001 First State Bank



#BK-002 Capital One Bank



#DA-001 Discount Auto Parts



#DP-004 MKT Depot



#ST-001 Starbucks Coffee



#WM-001 Walmart backdrop building



#ML-008 Modern Strip Mall

Keep updated for new products on our website: www.summit-customcuts.com