

Security Finance modernized downtown building kit in HO scale

This kit includes all building parts and signs milled in white and black styrene plastic, clear window glazing, and self-adhesive decals. All parts fit together but may need light sanding in joints for cosmetic reasons. The model needs painting.

Some model building and painting skills are required.

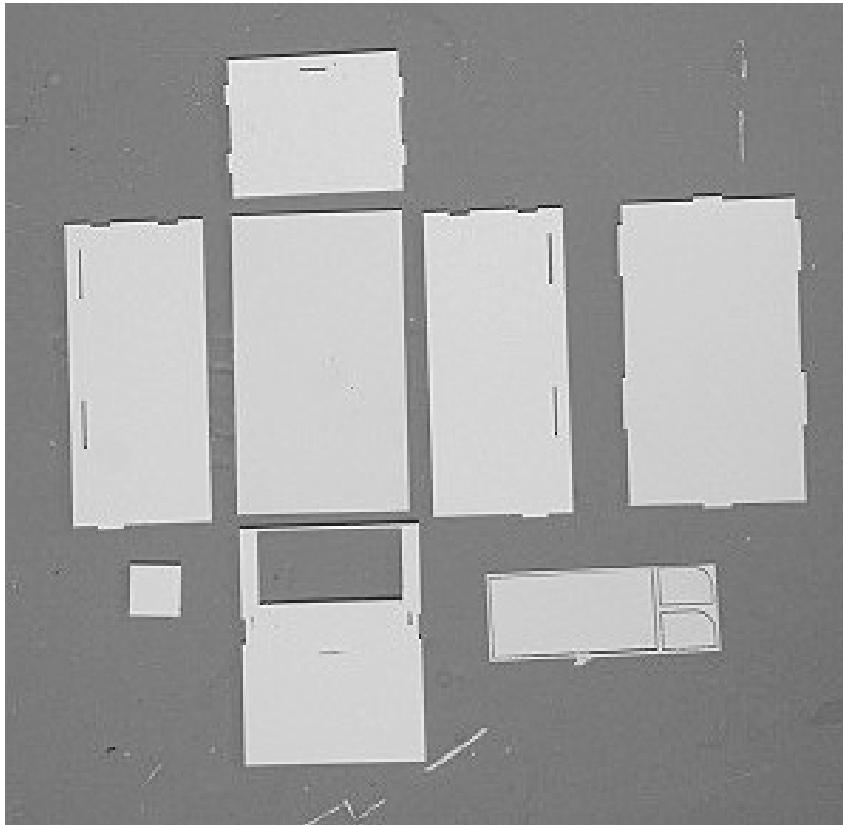


This kit is a model of a modernized old downtown building and does not have any details on the side and rear walls because it is meant to fit between other downtown buildings. Design Preservation Models, Smalltown USA, Walthers and others make these buildings.

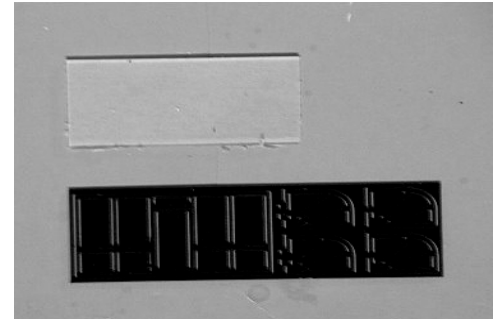
Assembly instructions for Security Finance building

Thank you for buying this Security Finance building kit. Please take some time to read these instructions before you begin assembling.

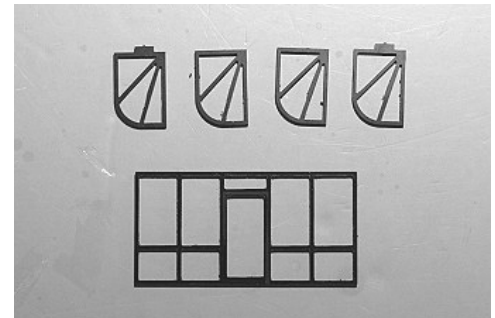
This kit is milled in styrene plastic and is very easy to glue together using Plastruct Plastic Weld or similar glue products. The wall parts are tabbed and slotted for easier assembly. Take your time to identify all parts, lay them out and clean them for any burrs before gluing them together.



Walls, roof and awning parts

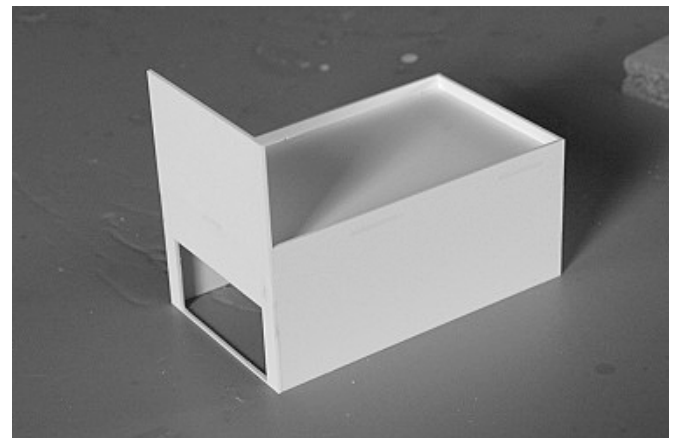
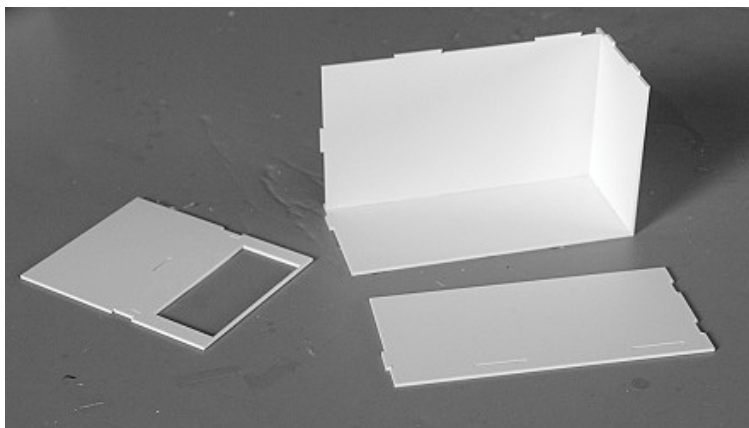


Window frames, brackets glazing

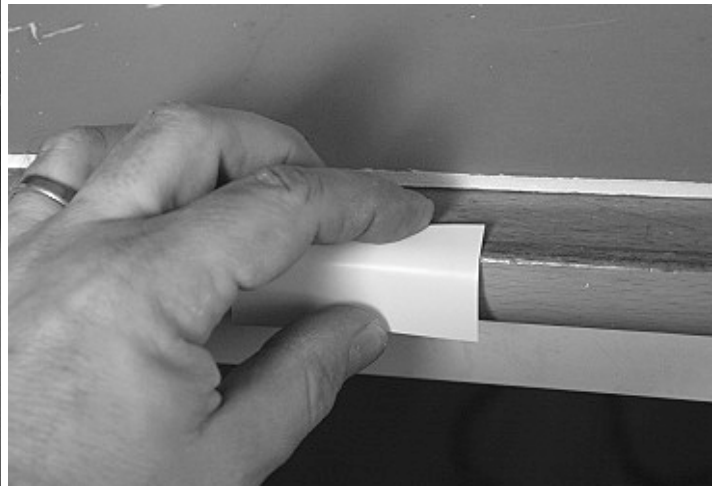
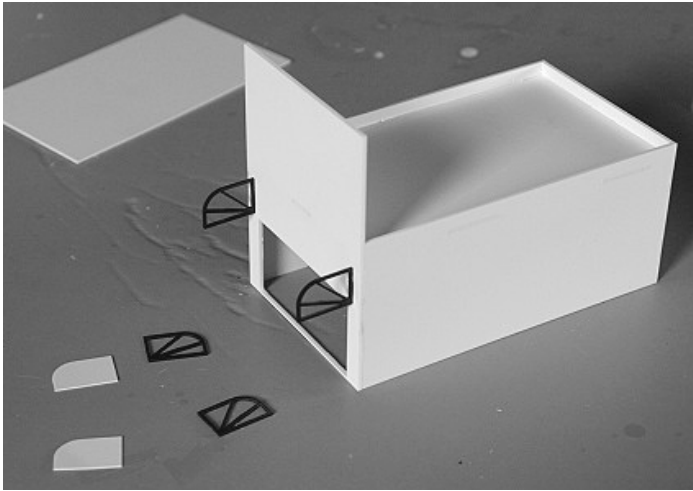


Window frames and awning brackets after cut-out

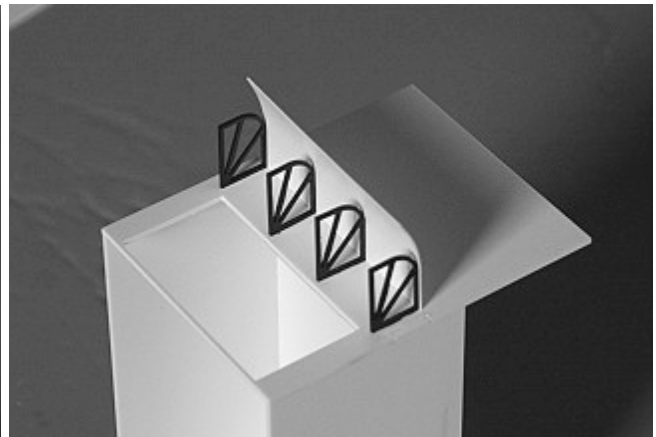
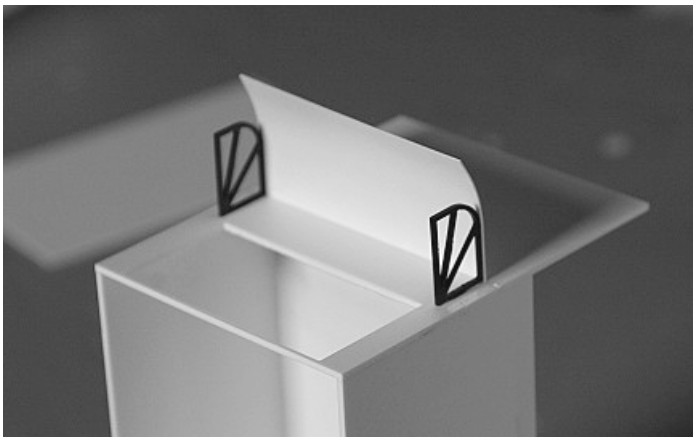
Assembly



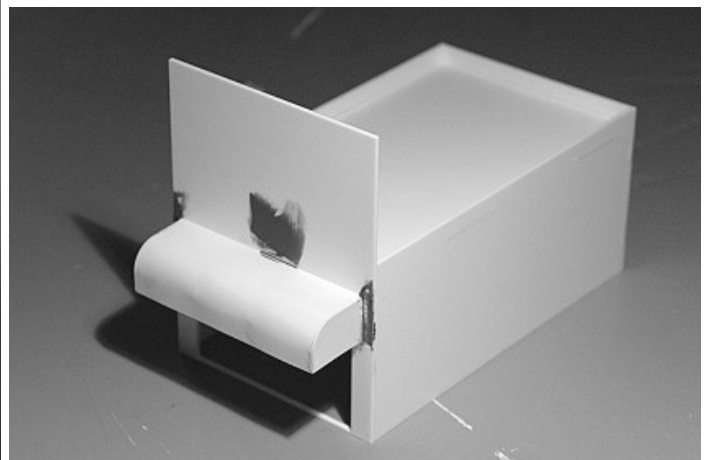
Start by attaching the walls to the roof as shown. The parts goes almost together, then apply the liquid glue and apply pressure to the part to make them go all the way together.



Glue the awning brackets to wall, fitting the tabs in the slots. Roll the awning piece over the edge of the table as shown, pre-bending 2/3 of it to a quarter tube. Glue the awning onto the brackets.



Glue on the middle brackets as shown. Hold the awning round the bracket with a couple of clamps and apply glue on the inside.



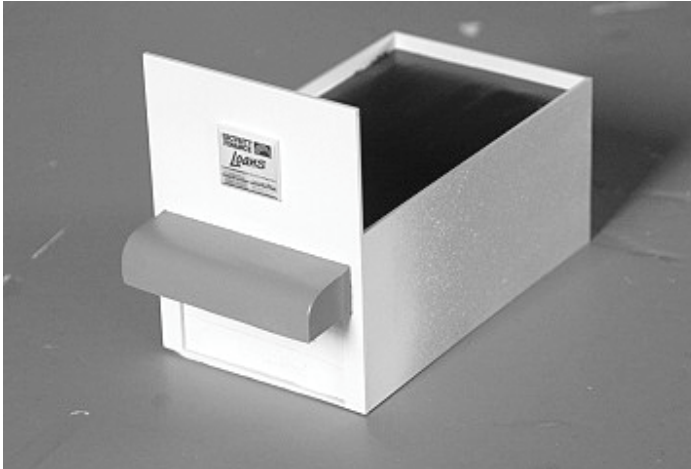
Let the clamps sit for awhile until the glue has set solidly. Glue on the end pieces. For best looking result, you may lightly sand the joints - corners and roof. If needed, fill with putty. Use a finer grit paper, 180 and finish with 6-800 until smooth. Now it is time to paint the building, see painting section.

Painting

Paint the whole building flat white. On this model I used Floquill Reefer White. For best results, give the building a coat of primer first. Do not leave any parts unpainted, white styrene will turn yellow over time when exposed to daylight.

Paint the awning (not the brackets) a Turquoise color

Before handling the decals, I recommend that you apply a coat of Testors Dull Cote or similar sealer to protect the printed surface. Cut the decals with a sharp hobby knife or a pair of scissors. Remove the backing paper using the tip of the knife to separate it from the decal.



Finishing

Mount the window glazing inside the wall, leaving a 0.04" (1mm) lip on the bottom (to leave room for the floor).

Remove the "filling" inside the window frames and cut/file away the burrs, then install the window frames, this is a press fit so you do not need to glue them in. If you want to glue them in place, use Crystal Clear or a similar liquid glass product.



Place your modernized building between other downtown buildings.

Enjoy your Security Finance on your layout.