


Subway building kit in N scale

SW-003

This kit includes all building parts and signs milled in white styrene plastic, clear window glazing, and self-adhesive decals. All parts fit together but may need light sanding in joints for cosmetic reasons. The model needs painting.

Some model building and painting skills are required.



Manufactured by Custom Cuts by 

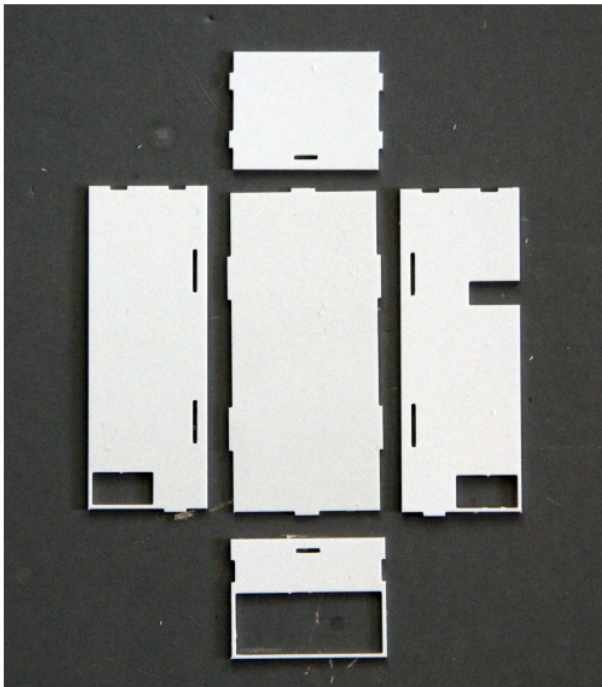
Summit USA LLC, 512A Ford Street, Lake Charles, LA 70601
www.summit-customcuts.com

Assembly instructions for Subway building

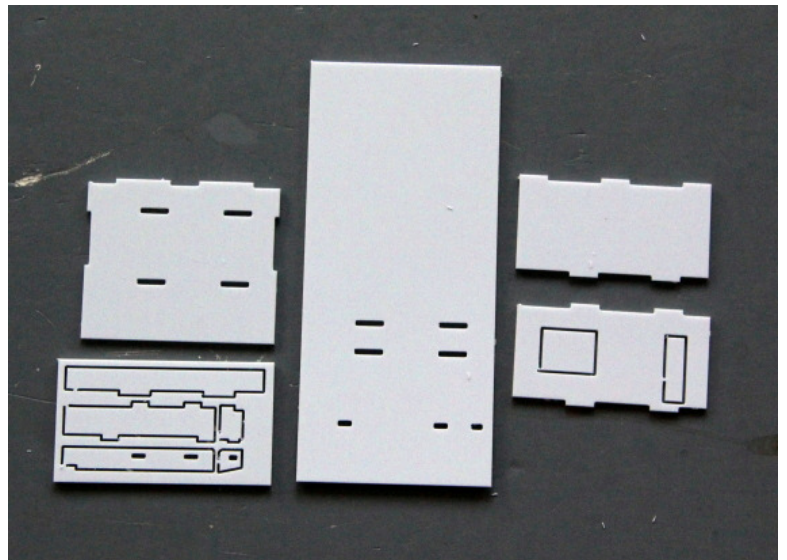
Thank you for buying this Subway building kit. Please take some time to read these instructions before you begin assembling.

This kit is milled in styrene plastic and is very easy to glue together using Plastruct Plastic Weld, MicroMark Samestuff or similar glue products. The wall parts are tabbed and slotted for easier assembly.

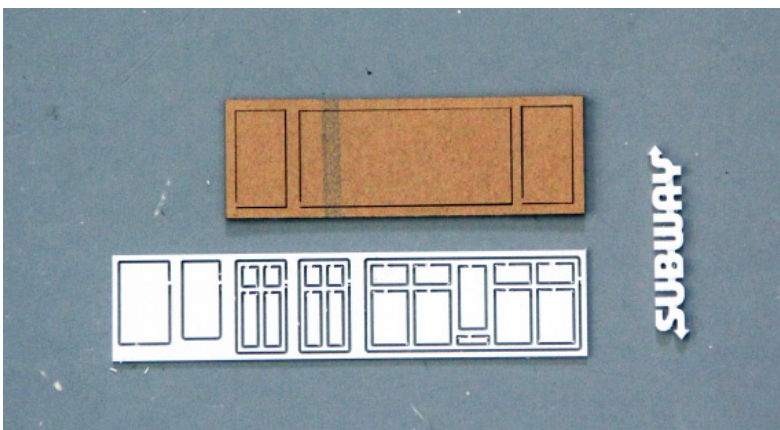
Take your time to identify all parts, lay them out and clean them for any burrs before gluing them together.



Walls and roof



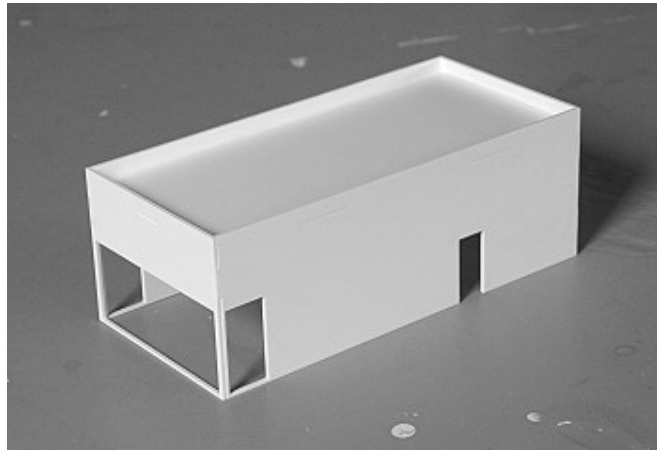
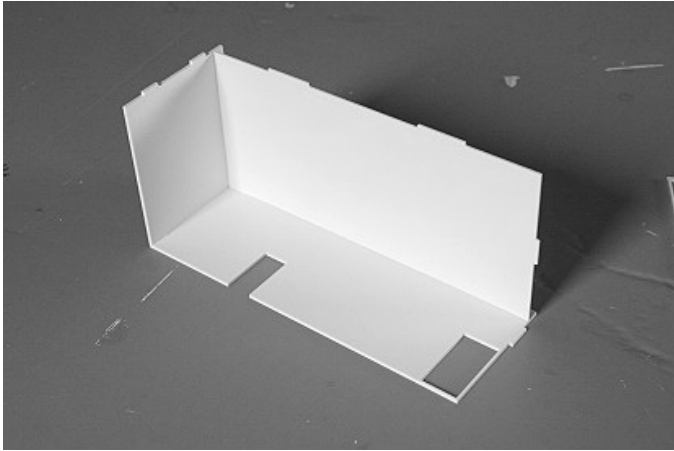
Base, inside walls and counter



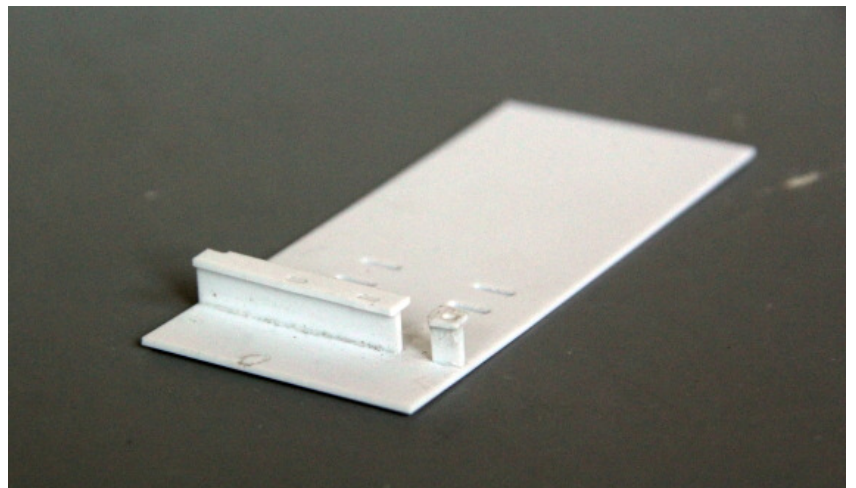
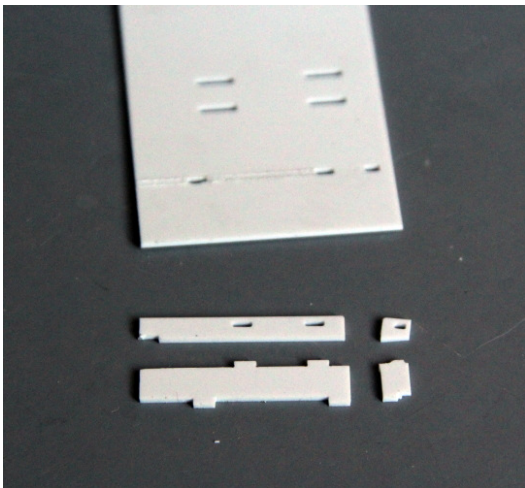
Window frames, doors, window glazing and wall logo sign

File all the corners of the tabs with a triangular file to ensure a close fit. The corners are slightly rounded because the end mill tool is round.

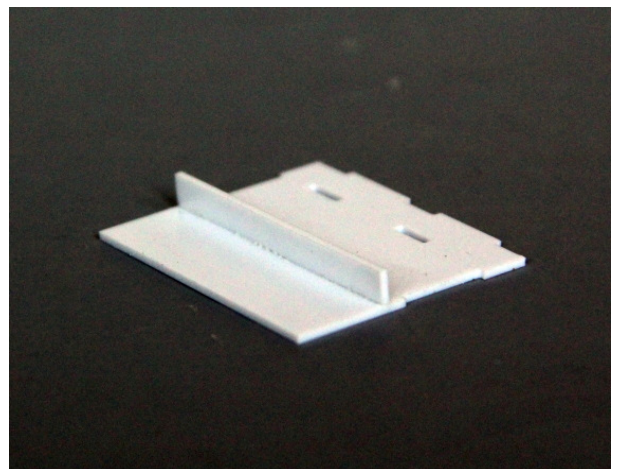
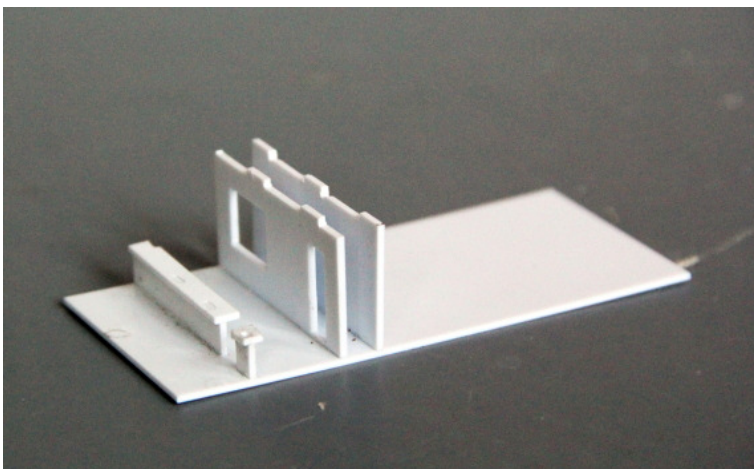
Assembly



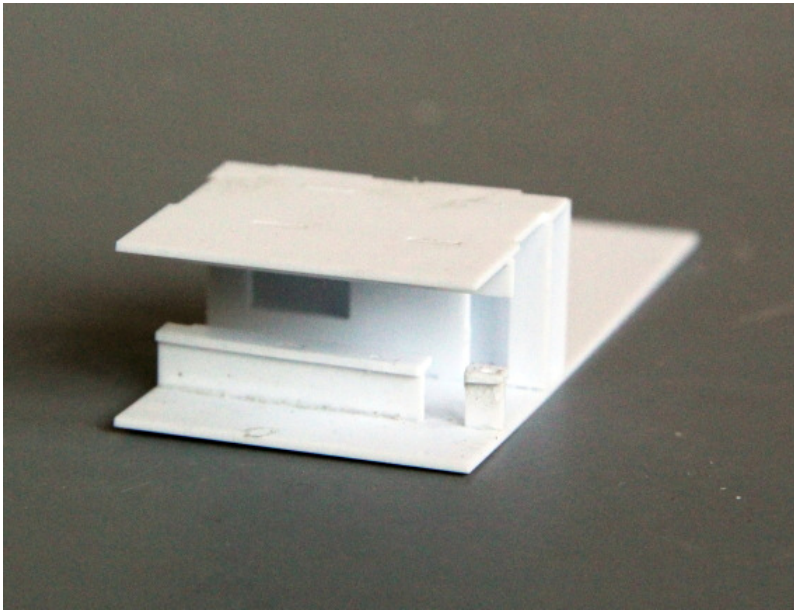
Start by attaching the walls to the roof as shown. The parts goes together, then apply the liquid glue and apply pressure to the parts to make a good joint.



Assemble the parts for the counter, fitting the slots and tabs. Mount the counter to the floor.



Glue the wall pieces to the floor as shown. Glue the over-the-counter valance to the small inner roof piece.



Glue the inner roof to the walls as shown.

For best looking result, you may lightly sand the joints - corners and roof. If needed, fill with putty. Use a finer grit paper, 180 and finish with 6-800 until smooth. Now it is time to paint the building and the signs.

Painting

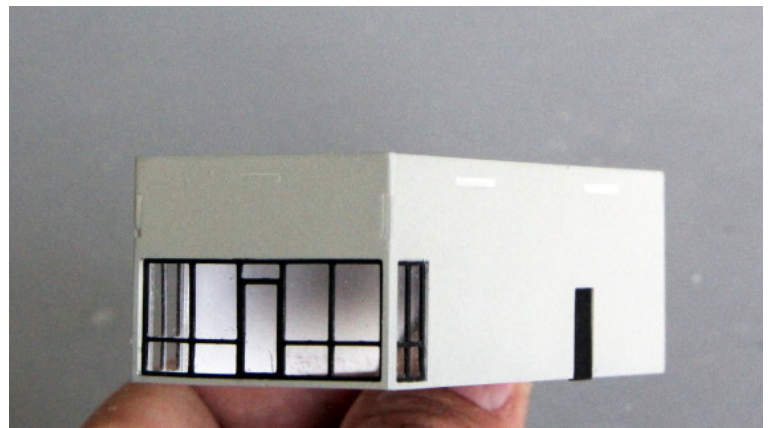
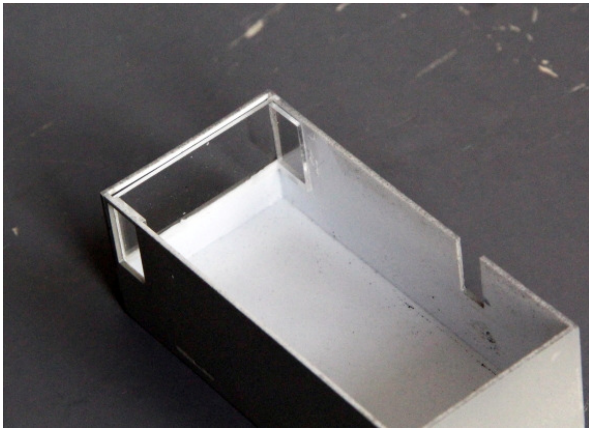
Paint the building light gray (or whatever you like). On this model, I used Testors Gull Gray. For best results, give the building a coat of primer first. Paint the roof dark gray (Floquil Grimy Black).

Remove the "filling" inside the window frames and cut/file away the burrs, then paint them flat or satin black.



Brush paint or use a Sharpie marker to color "Sub" yellow and "way" green. The Sharpie marker solution is the easiest, but the color will fade over a few years.

After the paint has dried, mount the side door by gluing the door support (the piece slightly larger than the door) inside the wall, then glue on the door. Leave a 0.04" lip to make room for the floor.



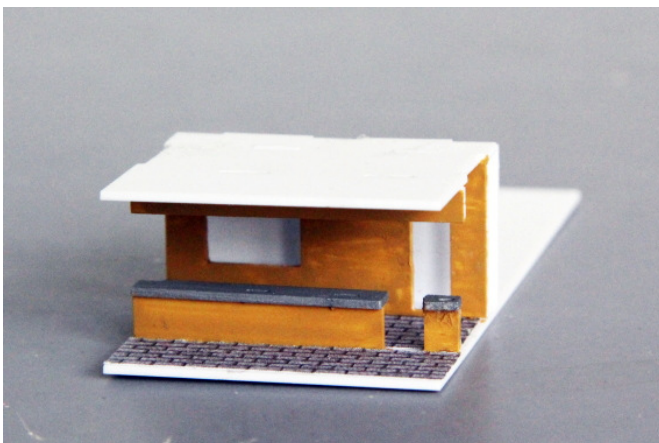
Mount the window-glazing inside the wall, leaving a 0.04" lip on the bottom of the tall front and side windows (to leave room for the floor).

Install the window frames, this is a press fit so you should not need to glue them in. You may need to sand the edges slightly to make a perfect fit. If you want to glue them in place, use Crystal Clear, Formula 500 Canopy Glue or a similar liquid glass product.

Finishing



Mount the sign on the wall using a tiny amount of white glue (or Woodland Scenics Scenic Glue). The white glue will let you move the sign until it sits right. The Scenic Cement dries clear and flat.



You can paint the interior any color you like; I used sand on the walls, gray on the countertop and covered the floor with self-adhesive brick paper from Micro-Mark (not included).

Insert the floor into the building.

If you want to detail the roof with vents and airconditioners, we recommend Walthers #933-3286 Roof details kit.

Enjoy your Subway Restaurant on your layout.

Here are some other products you may enjoy in a future project:



Taco Bell Restaurant

TB-002



Domino's Pizza

DP-002



Summit Motel

SM-002



Shell Gas Station & Store

SH-002



Dave's Coffee Shop (Denny's)

CS-002